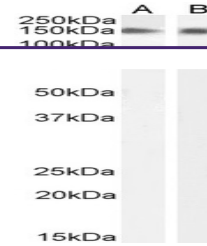


---

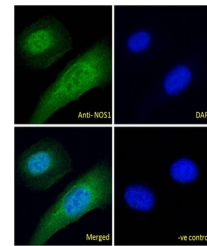
## Product Datasheet

### NOS1 Antibody (orb1249514)

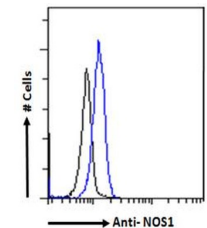
<b>Description</b>	NOS1 Antibody
<b>Species/Host</b>	Goat
<b>Reactivity</b>	Human, Mouse
<b>Conjugation</b>	Unconjugated
<b>Tested Applications</b>	ELISA, FC, IF, IHC, WB
<b>Immunogen</b>	The immunogen for this antibody is: C-ESKKDTDEVFSS
<b>Target</b>	NOS1
<b>Preservatives</b>	Supplied at 0.5 mg/ml in Tris saline, 0.02% sodium azide, pH 7.3 with 0.5% bovine serum albumin. Aliquot and store at -20°C. Minimize freezing and thawing.
<b>Form/Appearance</b>	Liquid
<b>Concentration</b>	500 ug/mL
<b>Storage</b>	Aliquot and store at -20°C. Minimize freezing and thawing.
<b>Note</b>	For research use only
<b>Application notes</b>	Peptide ELISA: antibody detection limit dilution 1:16000.Immunohistochemistry:Cryosections of Human and Mouse Hypothalamus. Optimal dilution: 1:3000.Immunofluorescence: Expression of the protein seen in the nucleus and plasma membrane of HeLa cells and in the nucleus and cytoplasm of U2OS cells. Recommended concentration: 10ug/ml.Flow Cytometry: Flow cytometric analysis of Kelly cells. Recommended concentration: 10ug/ml.
<b>Clonality</b>	Polyclonal
<b>Uniprot ID</b>	<a href="#">P29475</a>
<b>NCBI</b>	<a href="#">NP_001191142.1</a> , <a href="#">NP_001191147.1</a> , <a href="#">NP_000611.1</a>
<b>Dilution Range</b>	Peptide ELISA: antibody detection limit dilution 1:16000.Immunohistochemistry:Cryosections of Human and Mouse Hypothalamus. Optimal dilution: 1:3000.Immunofluorescence: Expression of the protein seen in the nucleus and plasma membrane of HeLa cells and in the nucleus and cytoplasm of U2OS cells. Recommended concentration: 10ug/ml.Flow Cytometry: Flow cytometric analysis of Kelly cells. Recommended concentration: 10ug/ml.
<b>Expiration Date</b>	12 months from date of receipt.



Immunostaining of NOS1 neurons in cryose...



Immunofluorescence analysis of paraforma...



Immunofluorescence analysis of paraforma...