
Product Datasheet

SLCO1B3 Antibody (orb1249434)

Description

SLCO1B3 Antibody

Species/Host

Goat

Reactivity

Human

Conjugation

Unconjugated

Tested Applications

ELISA, FC, IF, WB

Applications
Immunogen

The immunogen for this antibody is: C-NGTSPEIVEKD

Target

SLCO1B3

Preservatives

Supplied at 0.5 mg/ml in Tris saline, 0.02% sodium azide, pH 7.3 with 0.5% bovine serum albumin. Aliquot and store at -20°C. Minimize freezing and thawing.

Form/Appearance

Liquid

Concentration

500 ug/mL

Storage

Aliquot and store at -20°C. Minimize freezing and thawing.

Note

For research use only

Application notes

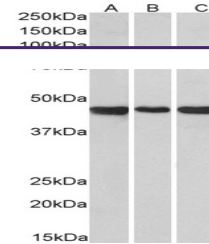
Peptide ELISA: antibody detection limit dilution 1:128000. Western Blot: Approx 75kDa band observed in lysates of cell line HEK293 and A431 (calculated MW of 74.2kDa according to NP_001336849.1 and 77.4kDa according to NP_062818.1). Recommended concentration: 0.5-1ug/ml. Primary incubation 1 hour at room temperature. Immunofluorescence: Strong expression of the protein seen in the membranes of A431 cells. Recommended concentration: 10ug/ml. Flow Cytometry: Flow cytometric analysis of HepG2 cells. Recommended concentration: 10ug/ml.

Clonality

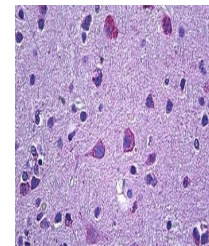
Polyclonal

Uniprot ID
[Q9NPD5](#)
NCBI
[NP_062818.1](#), [NP_001336849.1](#)
Dilution Range

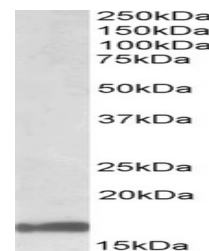
Peptide ELISA: antibody detection limit dilution 1:128000. Western Blot: Approx 75kDa band observed in lysates of cell line HEK293 and A431 (calculated MW of 74.2kDa according to NP_001336849.1 and 77.4kDa according to NP_062818.1). Recommended concentration: 0.5-1ug/ml. Primary incubation 1 hour at room temperature. Immunofluorescence: Strong expression of the protein seen in the membranes of A431 cells. Recommended concentration: 10ug/ml. Flow Cytometry: Flow cytometric analysis of HepG2 cells.



orb1249434 (1 ug/ml) staining of HEK293 ...



orb1249434 Immunofluorescence analysis o...



orb1249434 Flow cytometric analysis of p...