
Product Datasheet

RNF7 Antibody (orb1249385)

Description

RNF7 Antibody

Species/Host

Goat

Reactivity

Human

Conjugation

Unconjugated

Tested

ELISA, IHC, WB

Applications

The immunogen for this antibody is: DACLRCQAENKQE

Immunogen

RNF7

Preservatives

Supplied at 0.5 mg/ml in Tris saline, 0.02% sodium azide, pH 7.3 with 0.5% bovine serum albumin. Aliquot and store at -20°C. Minimize freezing and thawing.

Form/Appearance

Liquid

Concentration

500 ug/mL

Storage

Aliquot and store at -20°C. Minimize freezing and thawing.

Note

For research use only

Application notes

Peptide ELISA: antibody detection limit dilution 1:8000. Western Blot: Approx 11kDa band observed in Human Human Heart lysates (calculated MW of 12.7kDa according to NP_055060.1). Recommended concentration: 1-3ug/ml. An additional band of 28kDa was consistently observed, however this band was not blocked by the immunizing peptide and it is therefore a non-specific signal. We call for caution when used for other assays than Western blot. Immunohistochemistry: Paraffin embedded Human Kidney. Recommended concentration: 5ug/ml.

Clonality

Polyclonal

Uniprot ID
[Q9UBF6](#)
NCBI
[NP_055060.1](#)
Dilution Range

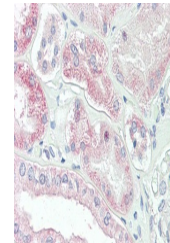
Peptide ELISA: antibody detection limit dilution 1:8000. Western Blot: Approx 11kDa band observed in Human Human Heart lysates (calculated MW of 12.7kDa according to NP_055060.1). Recommended concentration: 1-3ug/ml. An additional band of 28kDa was consistently observed, however this band was not blocked by the immunizing peptide and it is therefore a non-specific signal. We call for caution when used for other assays than Western blot. Immunohistochemistry: Paraffin embedded Human Kidney. Recommended concentration: 5ug/ml.

Expiration Date

12 months from date of receipt.


 250kDa
150kDa
100kDa


 50kDa
37kDa
25kDa
20kDa
15kDa

 orb1249385
(1 ug/ml)
staining of
Human H...

 orb1249385
(5 ug/ml)
staining of
paraffi...