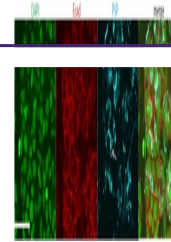

Product Datasheet

Prol1 Antibody (orb1249350)

Description	Prol1 Antibody
Species/Host	Goat
Reactivity	Mouse
Conjugation	Unconjugated
Tested Applications	ELISA, IHC
Immunogen	The immunogen for this antibody is: C-QFPVRKYLEDPY
Target	Prol1
Preservatives	Supplied at 0.5 mg/ml in Tris saline, 0.02% sodium azide, pH 7.3 with 0.5% bovine serum albumin. Aliquot and store at -20°C. Minimize freezing and thawing.
Form/Appearance	Liquid
Concentration	500 ug/mL
Storage	Aliquot and store at -20°C. Minimize freezing and thawing.
Note	For research use only
Application notes	<p>Peptide ELISA: antibody detection limit dilution 1:32000. Western Blot: Preliminary experiments gave an approx 45kDa band in Mouse Eye lysates after 1ug/ml antibody staining. Please note that currently we cannot find an explanation in the literature for the band we observe given the calculated size of 33.6kDa according to NP_032670.2. The 45kDa band was successfully blocked by incubation with the immunizing peptide. We would appreciate any feedback from people in the field - have any results been reported with other antibodies/lysates? Have any further splice variants/modified forms been reported? Immunohistochemistry: Positive staining in the submandibular salivary gland of the mouse, while cells remain negative in the sublingual salivary gland. Data provided by Everest Grant winner Melinda Larsen State University of New York, Albany, NY. A publication from this author includes the use of this antibody: Nelson et al, Biol Open. 2013 Apr 18;2(5):439-47, PMID: 23789091.</p>
Clonality	Polyclonal
Uniprot ID	E9PYQ4
NCBI	NP_032670.2
Dilution Range	Peptide ELISA: antibody detection limit dilution 1:32000. Western Blot: Preliminary experiments gave an approx 45kDa band in Mouse Eye lysates after 1ug/ml antibody staining. Please note that currently we cannot find an explanation in the literature for the band we observe given



orb1249350
(2.9 ug/ml)
staining of
cells...