
Product Datasheet

AIF1 Antibody (orb1249312)

Description

AIF1 Antibody

Species/Host

Goat

Reactivity

Human, Mouse, Rat

Conjugation

Unconjugated

Tested

ELISA, WB

Applications

The immunogen for this antibody is: C-TGPPAKKAISELP

Target

AIF1

Preservatives

Supplied at 0.5 mg/ml in Tris saline, 0.02% sodium azide, pH 7.3 with 0.5% bovine serum albumin. Aliquot and store at -20°C. Minimize freezing and thawing.

Form/Appearance

Liquid

Concentration

500 ug/mL

Storage

Aliquot and store at -20°C. Minimize freezing and thawing.

Note

For research use only

Application notes

Peptide ELISA: antibody detection limit dilution 1:128000. Western Blot: Approx 17kDa band observed in Human Brain (Frontal Cortex) and Rat Brain lysates (calculated MW of 16.7kDa according to Human NP_001614.3 and 16.8kDa according to Rat NP_058892.1). Recommended concentration: 0.3-1ug/ml. Primary incubation was 1 hour. This antibody can also be purchased as directly conjugated to HRP. Please specify when you order.

Clonality

Polyclonal

Uniprot ID
P55008
NCBI
NP_001614.3, NP_116573.1
Dilution Range

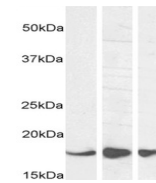
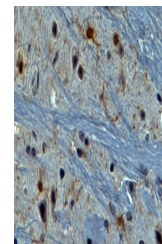
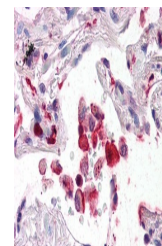
Peptide ELISA: antibody detection limit dilution 1:128000. Western Blot: Approx 17kDa band observed in Human Brain (Frontal Cortex) and Rat Brain lysates (calculated MW of 16.7kDa according to Human NP_001614.3 and 16.8kDa according to Rat NP_058892.1). Recommended concentration: 0.3-1ug/ml. Primary incubation was 1 hour. This antibody can also be purchased as directly conjugated to HRP. Please specify when you order.

Expiration Date

12 months from date of receipt.

 250kDa
150kDa
100kDa

A B C


 orb1249312
(1 ug/ml)
staining of
Human (...

 orb1249312
(2 ug/ml)
staining of
paraffi...

 orb1249312
(5 ug/ml)
staining of
paraffi...