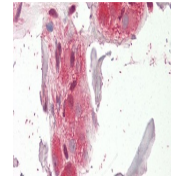
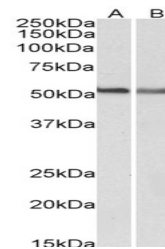

Product Datasheet

C22orf28 Antibody (orb1249283)

Description	C22orf28 Antibody
Species/Host	Goat
Reactivity	Human
Conjugation	Unconjugated
Tested Applications	ELISA, IHC, WB
Immunogen	The immunogen for this antibody is: C-RLLRNLDESDVQP
Target	C22orf28
Preservatives	Supplied at 0.5 mg/ml in Tris saline, 0.02% sodium azide, pH 7.3 with 0.5% bovine serum albumin. Aliquot and store at -20°C. Minimize freezing and thawing.
Form/Appearance	Liquid
Concentration	500 ug/mL
Storage	Aliquot and store at -20°C. Minimize freezing and thawing.
Note	For research use only
Application notes	Peptide ELISA: antibody detection limit dilution 1:64000. Western Blot: Approx 55kDa band observed in lysates of cell line Jurkat (calculated MW of 55.2kDa according to NP_055121.1). Recommended concentration: 0.05-0.2ug/ml. Immunohistochemistry: Paraffin embedded Human Kidney. Recommended concentration: 5ug/ml.
Clonality	Polyclonal
Uniprot ID	Q9Y310
NCBI	NP_055121.1
Dilution Range	Peptide ELISA: antibody detection limit dilution 1:64000. Western Blot: Approx 55kDa band observed in lysates of cell line Jurkat (calculated MW of 55.2kDa according to NP_055121.1). Recommended concentration: 0.05-0.2ug/ml. Immunohistochemistry: Paraffin embedded Human Kidney. Recommended concentration: 5ug/ml.
Expiration Date	12 months from date of receipt.



orb1249283
(0.05 ug/ml)
staining of
Jurk...



orb1249283
(5 ug/ml)
staining of
paraffi...