

---

## Product Datasheet

### SH3GL1 Antibody (orb1249257)

**Description**

SH3GL1 Antibody

**Species/Host**

Goat

**Reactivity**

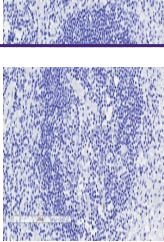
Human

**Conjugation**

Unconjugated

**Tested**

ELISA, IHC, WB

**Applications**


orb1249257  
(0.3 ug/ml)  
staining of  
K562 ...

**Immunogen**

The immunogen for this antibody is: C-EPFDLGEPEQSN

**Target**

SH3GL1

**Preservatives**

Supplied at 0.5 mg/ml in Tris saline, 0.02% sodium azide, pH 7.3 with 0.5% bovine serum albumin. Aliquot and store at -20°C. Minimize freezing and thawing.

**Form/Appearance**

Liquid

**Concentration**

500 ug/mL

**Storage**

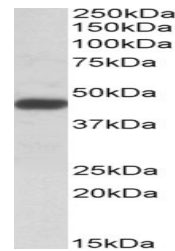
Aliquot and store at -20°C. Minimize freezing and thawing.

**Note**

For research use only

**Application notes**

Peptide ELISA: antibody detection limit dilution 1:32000. Western Blot: Approx 48kDa band observed in lysates of cell line K562 (calculated MW of 41.5kDa according to NP\_003016.1. The observed molecular weight corresponds to earlier findings in literature with different antibodies (So et al, Proc Natl Acad Sci U S A. 1997 Mar 18;94(6):2563-8.; PMID: 9122235). Recommended concentration: 0.3-1ug/ml. Primary incubation was 1 hour. Immunohistochemistry: Paraffin embedded Human Small Intestine. Recommended concentration: 5ug/ml.



orb1249257  
(5 ug/ml)  
staining of  
paraffi...

**Clonality**

Polyclonal

**Uniprot ID**
[Q99961](#)
**NCBI**
[NP\\_003016.1](#)
**Dilution Range**

Peptide ELISA: antibody detection limit dilution 1:32000. Western Blot: Approx 48kDa band observed in lysates of cell line K562 (calculated MW of 41.5kDa according to NP\_003016.1. The observed molecular weight corresponds to earlier findings in literature with different antibodies (So et al, Proc Natl Acad Sci U S A. 1997 Mar 18;94(6):2563-8.; PMID: 9122235). Recommended concentration: 0.3-1ug/ml. Primary incubation was 1 hour. Immunohistochemistry: Paraffin embedded Human Small Intestine. Recommended concentration: 5ug/ml.

**Expiration Date**

12 months from date of receipt.