
Product Datasheet

SLC12A2 Antibody (orb1249189)

Description

SLC12A2 Antibody

Species/Host

Goat

Reactivity

Human

Conjugation

Unconjugated

Tested

ELISA, FC, IF, IHC

Applications
Immunogen

The immunogen for this antibody is: C-NALQHSIRLSGVEDH

Target

SLC12A2

Preservatives

Supplied at 0.5 mg/ml in Tris saline, 0.02% sodium azide, pH 7.3 with 0.5% bovine serum albumin. Aliquot and store at -20°C. Minimize freezing and thawing.

Form/Appearance

Liquid

Concentration

500 ug/mL

Storage

Aliquot and store at -20°C. Minimize freezing and thawing.

Note

For research use only

Application notes

Peptide ELISA: antibody detection limit dilution 1:64000. Immunohistochemistry: In paraffin embedded Human Colon shows membranous staining. Recommended concentration: 3.75ug/ml. Immunofluorescence: Strong expression of the protein seen in the cytoplasm/ vesicles of HeLa cells. Recommended concentration: 10ug/ml. Flow Cytometry: Flow cytometric analysis of HeLa cells. Recommended concentration: 10ug/ml.

Clonality

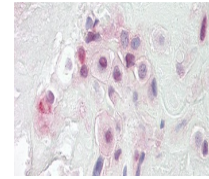
Polyclonal

Uniprot ID
[P55011](#)
NCBI
[NP_001243390.1](#), [NP_001037.1](#)
Dilution Range

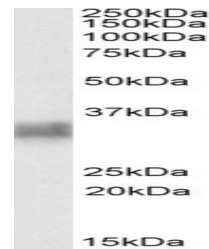
Peptide ELISA: antibody detection limit dilution 1:64000. Immunohistochemistry: In paraffin embedded Human Colon shows membranous staining. Recommended concentration: 3.75ug/ml. Immunofluorescence: Strong expression of the protein seen in the cytoplasm/ vesicles of HeLa cells. Recommended concentration: 10ug/ml. Flow Cytometry: Flow cytometric analysis of HeLa cells. Recommended concentration: 10ug/ml.

Expiration Date

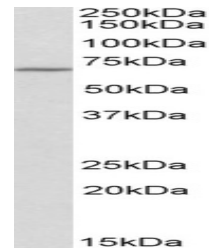
12 months from date of receipt.



orb1249189 (3.75 ug/ml) staining of para...



orb1249189 Immunofluorescence analysis o...



orb1249189 Flow cytometric analysis of p...