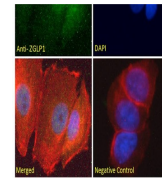
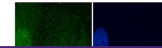
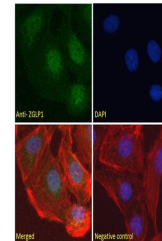

Product Datasheet

PAX4 Antibody (orb1249188)

Description	PAX4 Antibody
Species/Host	Goat
Reactivity	Human, Mouse
Conjugation	Unconjugated
Tested Applications	EIA, ELISA, WB
Immunogen	The immunogen for this antibody is: C-GKLATATSLPEDTVR
Target	PAX4
Preservatives	Supplied at 0.5 mg/ml in Tris saline, 0.02% sodium azide, pH 7.3 with 0.5% bovine serum albumin. Aliquot and store at -20°C. Minimize freezing and thawing.
Form/Appearance	Liquid
Concentration	500 ug/mL
Storage	Aliquot and store at -20°C. Minimize freezing and thawing.
Note	For research use only
Application notes	Peptide ELISA: antibody detection limit dilution 1:64000. Western Blot: Approx 37kDa band observed in Mouse Pancreas lysates and in lysates of cell lines A431, HeLa and K562 (calculated MW of 37.1kDa according to Human NP_006184.2 and 38.0kDa according to Mouse NP_035168.1). Recommended concentration: 0.2-0.6ug/ml. Enzyme immunoassay: Sandwich-type ELISA with increasing amount of recombinant PAX4 captured by a rabbit antibody. Recommended reporter concentration: 1-2ug/ml
Clonality	Polyclonal
Uniprot ID	O43316
NCBI	NP_006184.2
Dilution Range	Peptide ELISA: antibody detection limit dilution 1:64000. Western Blot: Approx 37kDa band observed in Mouse Pancreas lysates and in lysates of cell lines A431, HeLa and K562 (calculated MW of 37.1kDa according to Human NP_006184.2 and 38.0kDa according to Mouse NP_035168.1). Recommended concentration: 0.2-0.6ug/ml. Enzyme immunoassay: Sandwich-type ELISA with increasing amount of recombinant PAX4 captured by a rabbit antibody. Recommended reporter concentration: 1-2ug/ml
Expiration Date	12 months from date of receipt.



orb1249188
(0.2 ug/ml)
staining of
Mouse...



orb1249188
(1.5 ug/ml) as
the reporter
a...