
Product Datasheet

TOMM40 Antibody (orb1249185)

Description

TOMM40 Antibody

Species/Host

Goat

Reactivity

Human

Conjugation

Unconjugated

Tested

ELISA, WB

Applications
Immunogen

The immunogen for this antibody is: C-HTVALSTIGESNYH

Target

TOMM40

Preservatives

Supplied at 0.5 mg/ml in Tris saline, 0.02% sodium azide, pH 7.3 with 0.5% bovine serum albumin. Aliquot and store at -20°C. Minimize freezing and thawing.

Form/Appearance

Liquid

Concentration

500 ug/mL

Storage

Aliquot and store at -20°C. Minimize freezing and thawing.

Note

For research use only

Application notes

Peptide ELISA: antibody detection limit dilution 1:16000. Western Blot: Approx 37kDa band observed in Human Brain (Cerebellum and Frontal Cortex) lysates (calculated MW of 37.9kDa according to NP_006105.1). Recommended concentration: 1-3ug/ml. Primary incubation was 1 hour.

Clonality

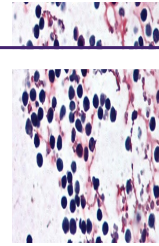
Polyclonal

Uniprot ID
[O96008](#)
NCBI
[NP_006105.1](#)
Dilution Range

Peptide ELISA: antibody detection limit dilution 1:16000. Western Blot: Approx 37kDa band observed in Human Brain (Cerebellum and Frontal Cortex) lysates (calculated MW of 37.9kDa according to NP_006105.1). Recommended concentration: 1-3ug/ml. Primary incubation was 1 hour.

Expiration Date

12 months from date of receipt.


 orb1249185
(2 ug/ml)
staining of
Human F...