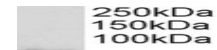


---

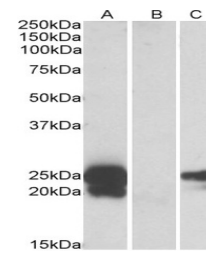
## Product Datasheet

### ZGLP1 Antibody (orb1249141)

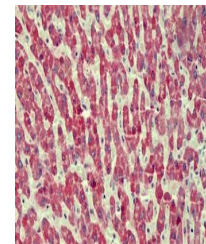
<b>Description</b>	ZGLP1 Antibody
<b>Species/Host</b>	Goat
<b>Reactivity</b>	Human
<b>Conjugation</b>	Unconjugated
<b>Tested Applications</b>	ELISA, FC, IF
<b>Immunogen</b>	The immunogen for this antibody is: C-EGVTLKFQIKPDS
<b>Target</b>	ZGLP1
<b>Preservatives</b>	Supplied at 0.5 mg/ml in Tris saline, 0.02% sodium azide, pH 7.3 with 0.5% bovine serum albumin. Aliquot and store at -20°C. Minimize freezing and thawing.
<b>Form/Appearance</b>	Liquid
<b>Concentration</b>	500 ug/mL
<b>Storage</b>	Aliquot and store at -20°C. Minimize freezing and thawing.
<b>Note</b>	For research use only
<b>Application notes</b>	Peptide ELISA: antibody detection limit dilution 1:8000.Western Blot:Preliminary experiments gave an approx 35kDa band in Human Testis lysates after 1ug/ml antibody staining. Please note that currently we cannot find an explanation in the literature for the band, given the calculated size of 29.6kDa according to NP_001096637.1. The 35kDa band was successfully blocked by incubation with the immunizing peptide.Immunofluorescence: Strong expression of the protein seen in the nuclei of MCF7 and U2OS cells. Recommended concentration: 10ug/ml. Flow Cytometry: Flow cytometric analysis of K562 cells. Recommended concentration: 10ug/ml.
<b>Clonality</b>	Polyclonal
<b>Uniprot ID</b>	<a href="#">POC6A0</a>
<b>NCBI</b>	<a href="#">NP_001096637.1</a>
<b>Dilution Range</b>	Peptide ELISA: antibody detection limit dilution 1:8000.Western Blot:Preliminary experiments gave an approx 35kDa band in Human Testis lysates after 1ug/ml antibody staining. Please note that currently we cannot find an explanation in the literature for the band, given the calculated size of 29.6kDa according to NP_001096637.1. The 35kDa band was successfully blocked by incubation with the immunizing



orb1249141  
Immunofluorescence  
analysis o...



orb1249141  
mmunofluorescence  
analysis of...



orb1249141 Flow  
cytometric analysis  
of p...