

## Product Datasheet

### CLCN2 Antibody (orb1249124)

**Description**

CLCN2 Antibody

**Species/Host**

Goat

**Reactivity**

Human

**Conjugation**

Unconjugated

**Tested**

ELISA, WB

**Applications**
**Immunogen**

The immunogen for this antibody is: QQLDEPVNFSDCK

**Target**

CLCN2

**Preservatives**

Supplied at 0.5 mg/ml in Tris saline, 0.02% sodium azide, pH 7.3 with 0.5% bovine serum albumin. Aliquot and store at -20°C. Minimize freezing and thawing.

**Form/Appearance**

Liquid

**Concentration**

500 ug/mL

**Storage**

Aliquot and store at -20°C. Minimize freezing and thawing.

**Note**

For research use only

**Application notes**

Peptide ELISA: antibody detection limit dilution 1:64000. Western Blot: Approx 100kDa band observed in lysates of cell line HeLa (calculated MW of 98.5kDa according to NP\_004357.3). Recommended concentration: 0.3-1ug/ml.

**Clonality**

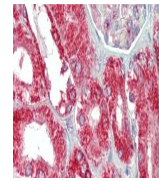
Polyclonal

**Uniprot ID**
[P51788](#)
**NCBI**
[NP\\_004357.3](#)
**Dilution Range**

Peptide ELISA: antibody detection limit dilution 1:64000. Western Blot: Approx 100kDa band observed in lysates of cell line HeLa (calculated MW of 98.5kDa according to NP\_004357.3). Recommended concentration: 0.3-1ug/ml.

**Expiration Date**

12 months from date of receipt.


 orb1249124  
(0.3 ug/ml)  
staining of  
HeLa ...