

---

## Product Datasheet

### PSMB4 Antibody (orb1249051)

**Description**

PSMB4 Antibody

**Species/Host**

Goat

**Reactivity**

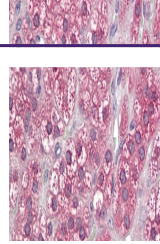
Human, Mouse, Rat

**Conjugation**

Unconjugated

**Tested Applications**

ELISA, WB

**Applications**


orb1249051  
(0.1 ug/ml)  
staining of  
HEK29...

**Immunogen**

The immunogen for this antibody is: C-NRFQIATVTE

**Target**

PSMB4

**Preservatives**

Supplied at 0.5 mg/ml in Tris saline, 0.02% sodium azide, pH 7.3 with 0.5% bovine serum albumin. Aliquot and store at -20°C. Minimize freezing and thawing.

**Form/Appearance**

Liquid

**Concentration**

500 ug/mL

**Storage**

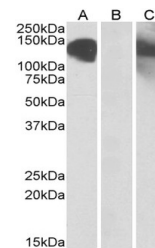
Aliquot and store at -20°C. Minimize freezing and thawing.

**Note**

For research use only

**Application notes**

Peptide ELISA: antibody detection limit dilution 1:8000. Western Blot: Approx 25-26kDa band observed in lysates of cell lines HEK293, HeLa, and K562 and in Mouse and Rat Liver lysates (calculated MW of 29.1kDa according to NP\_002787.2). The observed molecular weight corresponds to earlier findings with different antibodies from other commercial sources. Recommended concentration: 0.1-0.3ug/ml.



orb1249051  
(0.3 ug/ml)  
staining of  
Mouse...

**Clonality**

Polyclonal

**Uniprot ID**
[P28070](#)
**NCBI**
[NP\\_002787.2](#)
**Dilution Range**

Peptide ELISA: antibody detection limit dilution 1:8000. Western Blot: Approx 25-26kDa band observed in lysates of cell lines HEK293, HeLa, and K562 and in Mouse and Rat Liver lysates (calculated MW of 29.1kDa according to NP\_002787.2). The observed molecular weight corresponds to earlier findings with different antibodies from other commercial sources. Recommended concentration: 0.1-0.3ug/ml.

**Expiration Date**

12 months from date of receipt.