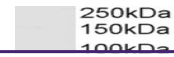


---

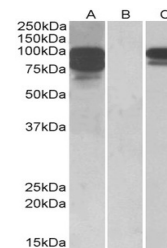
## Product Datasheet

### 41886 Antibody (orb1249029)

<b>Description</b>	41886 Antibody
<b>Species/Host</b>	Goat
<b>Reactivity</b>	Human, Mouse
<b>Conjugation</b>	Unconjugated
<b>Tested Applications</b>	ELISA, IHC, WB
<b>Immunogen</b>	The immunogen for this antibody is: C-RNKLRESGTD
<b>Target</b>	41886
<b>Preservatives</b>	Supplied at 0.5 mg/ml in Tris saline, 0.02% sodium azide, pH 7.3 with 0.5% bovine serum albumin. Aliquot and store at -20°C. Minimize freezing and thawing.
<b>Form/Appearance</b>	Liquid
<b>Concentration</b>	500 ug/mL
<b>Storage</b>	Aliquot and store at -20°C. Minimize freezing and thawing.
<b>Note</b>	For research use only
<b>Application notes</b>	Peptide ELISA: antibody detection limit dilution 1:64000. Western Blot: Approx 50kDa band observed in Human and Mouse Heart lysates (calculated MW of 55.1kDa according to NP_004565.1 and 53.0kDa according to NP_536341). Recommended concentration: 1-3ug/ml. Immunohistochemistry: Paraffin embedded Human Brain (Cerebellum). Recommended concentration: 3.75ug/ml.
<b>Clonality</b>	Polyclonal
<b>Uniprot ID</b>	<a href="#">O43236</a>
<b>NCBI</b>	<a href="#">NP_536341.1</a> , <a href="#">NP_004565.1</a> , <a href="#">NP_001185642.1</a>
<b>Dilution Range</b>	Peptide ELISA: antibody detection limit dilution 1:64000. Western Blot: Approx 50kDa band observed in Human and Mouse Heart lysates (calculated MW of 55.1kDa according to NP_004565.1 and 53.0kDa according to NP_536341). Recommended concentration: 1-3ug/ml. Immunohistochemistry: Paraffin embedded Human Brain (Cerebellum). Recommended concentration: 3.75ug/ml.
<b>Expiration Date</b>	12 months from date of receipt.



orb1249029 (1 ug/ml) staining of Human H...



orb1249029 (3.75 ug/ml) staining of para...