
Product Datasheet

PCBP1 Antibody (orb1249007)

Description

PCBP1 Antibody

Species/Host

Goat

Reactivity

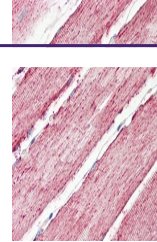
Human, Rat

Conjugation

Unconjugated

Tested

ELISA, WB

Applications


orb1249007
(0.1 ug/ml)
staining of
PBMC ...

Immunogen

The immunogen for this antibody is: C-SIQGQHTISPLD

Target

PCBP1

Preservatives

Supplied at 0.5 mg/ml in Tris saline, 0.02% sodium azide, pH 7.3 with 0.5% bovine serum albumin. Aliquot and store at -20°C. Minimize freezing and thawing.

Form/Appearance

Liquid

Concentration

500 ug/mL

Storage

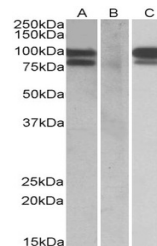
Aliquot and store at -20°C. Minimize freezing and thawing.

Note

For research use only

Application notes

Peptide ELISA: antibody detection limit dilution 1:8000. Western Blot: Approx 38kDa band observed in Human Peripheral Blood Nucleocytes lysates (calculated MW of 37.5kDa according to NP_006187.2). The 38kDa was also observed in Rat Spleen while a 37kDa band was observed in Rat Thymus. Recommended concentration: 0.1-0.3ug/ml. Additional validation: This antibody has been successfully used in the following paper: Sikorski et al. (2018) PMID: 30377371.



orb1249007
(0.1 ug/ml)
staining of
Rat S...

Clonality

Polyclonal

Uniprot ID
[Q15365](#)
NCBI
[NP_006187.2](#)
Dilution Range

Peptide ELISA: antibody detection limit dilution 1:8000. Western Blot: Approx 38kDa band observed in Human Peripheral Blood Nucleocytes lysates (calculated MW of 37.5kDa according to NP_006187.2). The 38kDa was also observed in Rat Spleen while a 37kDa band was observed in Rat Thymus. Recommended concentration: 0.1-0.3ug/ml. Additional validation: This antibody has been successfully used in the following paper: Sikorski et al. (2018) PMID: 30377371.

Expiration Date

12 months from date of receipt.