
Product Datasheet

CMA1 Antibody (orb1248949)

Description

CMA1 Antibody

Species/Host

Goat

Reactivity

Human

Conjugation

Unconjugated

Tested Applications

ELISA, IHC, WB

Immunogen

The immunogen for this antibody is: C-QFRHPKYNTSTLHHD

Target

CMA1

Preservatives

Supplied at 0.5 mg/ml in Tris saline, 0.02% sodium azide, pH 7.3 with 0.5% bovine serum albumin. Aliquot and store at -20°C. Minimize freezing and thawing.

Form/Appearance

Liquid

Concentration

500 ug/mL

Storage

Aliquot and store at -20°C. Minimize freezing and thawing.

Note

For research use only

Application notes

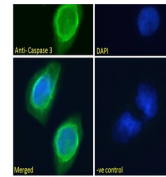
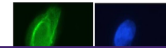
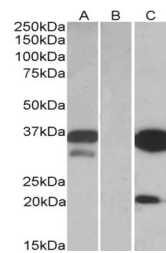
Peptide ELISA: antibody detection limit dilution 1:128000. Western Blot: In transfected HEK293 transiently expressing full-length Human CMA1 (myc and DYKDDDDK tagged), a band of approx. 35kDa was observed. No bands were observed in mock-transfected HEK293 and the same band was observed using anti-DYKDDDDK tag antibody. Recommended concentration, 0.5-1ug/ml. Immunohistochemistry: Paraffin embedded Human Testis and Tonsil (Mast cells). Recommended concentration: 1.5ug/ml. Purchase the +ve control! The transfected lysate used to QC this product is available for sale. Please email sales@everestbiotech.com to request datasheet, pricing and delivery information.

Clonality

Polyclonal

Uniprot ID
P23946
NCBI
NP_001827.1
Dilution Range

Peptide ELISA: antibody detection limit dilution 1:128000. Western Blot: In transfected HEK293 transiently expressing full-length Human CMA1 (myc and DYKDDDDK tagged), a band of approx. 35kDa was observed. No bands were observed in mock-transfected HEK293 and the same band was observed using anti-DYKDDDDK tag antibody. Recommended concentration, 0.5-1ug/ml. Immunohistochemistry: Paraffin embedded Human Testis and Tonsil (Mast cells). Recommended concentration:


 HEK293 lysate
(10 ug protein
in RIPA buf...

 orb1248949
(1.5 ug/ml)
staining of
paraf...

 orb1248949
(1.5 ug/ml)
staining of
paraf...