

---

## Product Datasheet

### FOXC1 Antibody (orb1248947)

**Description**

FOXC1 Antibody

**Species/Host**

Goat

**Reactivity**

Human

**Conjugation**

Unconjugated

**Tested**

ELISA, FC, IF, IHC

**Applications**
**Immunogen**

The immunogen for this antibody is: RTSGAFVYDCSKF

**Target**

FOXC1

**Preservatives**

Supplied at 0.5 mg/ml in Tris saline, 0.02% sodium azide, pH 7.3 with 0.5% bovine serum albumin. Aliquot and store at -20°C. Minimize freezing and thawing.

**Form/Appearance**

Liquid

**Concentration**

500 ug/mL

**Storage**

Aliquot and store at -20°C. Minimize freezing and thawing.

**Note**

For research use only

**Application notes**

Peptide ELISA: antibody detection limit dilution 1:32000. Immunofluorescence: Strong expression of the protein seen in the cytoplasm and nucleus of U2OS cells. Recommended concentration: 10ug/ml. Flow Cytometry: Flow cytometric analysis of HEK293 cells. Recommended concentration: 10ug/ml.

**Clonality**

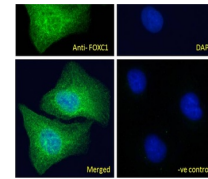
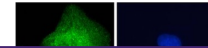
Polyclonal

**Uniprot ID**
[Q12948](#)
**NCBI**
[NP\\_001444.2](#)
**Dilution Range**

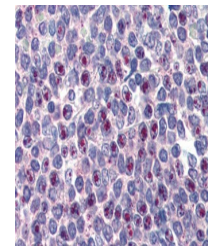
Peptide ELISA: antibody detection limit dilution 1:32000. Immunofluorescence: Strong expression of the protein seen in the cytoplasm and nucleus of U2OS cells. Recommended concentration: 10ug/ml. Flow Cytometry: Flow cytometric analysis of HEK293 cells. Recommended concentration: 10ug/ml.

**Expiration Date**

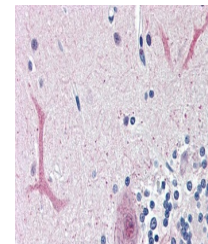
12 months from date of receipt.



orb1248947  
Immunofluorescence  
analysis o...



orb1248947 (3.75  
ug/ml) staining of  
para...



orb1248947 (3.75  
ug/ml) staining of  
para...