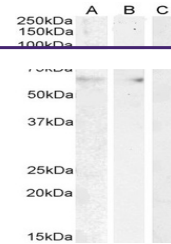
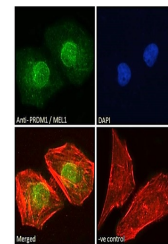

Product Datasheet

GPR17 Antibody (orb1248930)

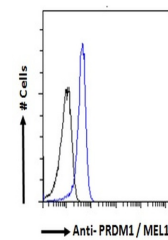
Description	GPR17 Antibody
Species/Host	Goat
Reactivity	Human, Rat
Conjugation	Unconjugated
Tested Applications	ELISA, IHC, WB
Immunogen	The immunogen for this antibody is: C-EGKTNESSLSAKSE
Target	GPR17
Preservatives	Supplied at 0.5 mg/ml in Tris saline, 0.02% sodium azide, pH 7.3 with 0.5% bovine serum albumin. Aliquot and store at -20°C. Minimize freezing and thawing.
Form/Appearance	Liquid
Concentration	500 ug/mL
Storage	Aliquot and store at -20°C. Minimize freezing and thawing.
Note	For research use only
Application notes	Peptide ELISA: antibody detection limit dilution 1:1000.Western Blot:Approx 45kDa band observed in Human Brain (Cerebellum), and in Rat Brain lysates (calculated MW of 41.0kDa according to Human NP_005282.1 and 37.9kDa according to Rat NP_001065245.1). Recommended concentration: 0.1-0.3ug/ml. Preliminary testing was unsuccessful on Mouse Brain for this particular batch.Immunohistochemistry:Paraffin embedded Human Heart. Recommended concentration: 10ug/ml.
Clonality	Polyclonal
Uniprot ID	Q13304
NCBI	NP_005282.1
Dilution Range	Peptide ELISA: antibody detection limit dilution 1:1000.Western Blot:Approx 45kDa band observed in Human Brain (Cerebellum), and in Rat Brain lysates (calculated MW of 41.0kDa according to Human NP_005282.1 and 37.9kDa according to Rat NP_001065245.1). Recommended concentration: 0.1-0.3ug/ml. Preliminary testing was unsuccessful on Mouse Brain for this particular batch.Immunohistochemistry:Paraffin embedded Human Heart. Recommended concentration: 10ug/ml.
Expiration Date	12 months from date of receipt.



orb1248930
(0.1 ug/ml)
staining of
Human...



orb1248930
(0.3 ug/ml)
staining of Rat
B...



orb1248930
(10 ug/ml)
staining of
paraff...