

---

## Product Datasheet

### STXBP1 Antibody (orb1248794)

**Description**

STXBP1 Antibody

**Species/Host**

Goat

**Reactivity**

Human, Mouse

**Conjugation**

Unconjugated

**Tested**

ELISA, IHC, WB

**Applications**
**Immunogen**

The immunogen for this antibody is: C-SRVSFEDQAPTME

**Target**

STXBP1

**Preservatives**

Supplied at 0.5 mg/ml in Tris saline, 0.02% sodium azide, pH 7.3 with 0.5% bovine serum albumin. Aliquot and store at -20°C. Minimize freezing and thawing.

**Form/Appearance**

Liquid

**Concentration**

500 ug/mL

**Storage**

Aliquot and store at -20°C. Minimize freezing and thawing.

**Note**

For research use only

**Application notes**

Peptide ELISA: antibody detection limit dilution 1:16000. Western Blot: Approx 75kDa band observed in Human and Mouse Brain lysates (calculated MW of 68.7kDa according to NP\_003156.1). Recommended concentration: 0.1-0.3ug/ml. Immunohistochemistry: In paraffin embedded Human Brain cortex shows vesicular staining in neuronal bodies. Recommended concentration: 5-10ug/ml. This antibody has been successfully used in IHC: Meijer M et al, PLoS One. 2015 Sep 25;10(9):e0138950. PMID: 26407320.

**Clonality**

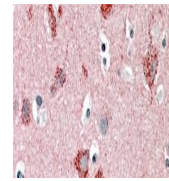
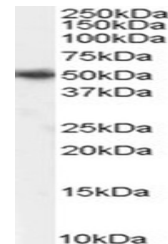
Polyclonal

**Uniprot ID**
[P61764](#)
**NCBI**
[NP\\_003156.1](#)
**Dilution Range**

Peptide ELISA: antibody detection limit dilution 1:16000. Western Blot: Approx 75kDa band observed in Human and Mouse Brain lysates (calculated MW of 68.7kDa according to NP\_003156.1). Recommended concentration: 0.1-0.3ug/ml. Immunohistochemistry: In paraffin embedded Human Brain cortex shows vesicular staining in neuronal bodies. Recommended concentration: 5-10ug/ml. This antibody has been successfully used in IHC: Meijer M et al, PLoS One. 2015 Sep 25;10(9):e0138950. PMID: 26407320.

**Expiration Date**

12 months from date of receipt.


 orb1248794  
(0.1 ug/ml)  
staining of  
Human...

 orb1248794  
(5 ug/ml)  
staining of  
paraffi...