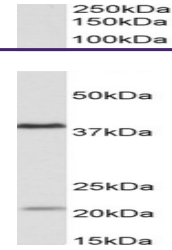

Product Datasheet

Nprl3 Antibody (orb1248785)

Description	Nprl3 Antibody
Species/Host	Goat
Reactivity	Human
Conjugation	Unconjugated
Tested Applications	ELISA, WB
Immunogen	The immunogen for this antibody is: C-QRSQEHPASQTNKP
Target	Nprl3
Preservatives	Supplied at 0.5 mg/ml in Tris saline, 0.02% sodium azide, pH 7.3 with 0.5% bovine serum albumin. Aliquot and store at -20°C. Minimize freezing and thawing.
Form/Appearance	Liquid
Concentration	500 ug/mL
Storage	Aliquot and store at -20°C. Minimize freezing and thawing.
Note	For research use only
Application notes	Peptide ELISA: antibody detection limit dilution 1:16000. Western Blot: Approx 55kDa band observed in Human Heart lysates (calculated MW of 63.6kDa according to NP_853547.1). Recommended concentration: 0.3-1ug/ml. Primary incubation was 1 hour. Preliminary testing was unsuccessful on Mouse and Rat for this particular batch.
Clonality	Polyclonal
MW	Approx 55 kDa
Uniprot ID	Q12980
NCBI	NP_853547.1
Dilution Range	Peptide ELISA: antibody detection limit dilution 1:16000. Western Blot: Approx 55kDa band observed in Human Heart lysates (calculated MW of 63.6kDa according to NP_853547.1). Recommended concentration: 0.3-1ug/ml. Primary incubation was 1 hour. Preliminary testing was unsuccessful on Mouse and Rat for this particular batch.
Expiration Date	12 months from date of receipt.



orb1248785
(0.3 ug/ml)
staining of
Human...