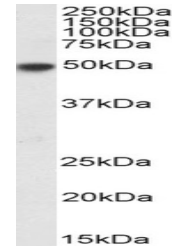


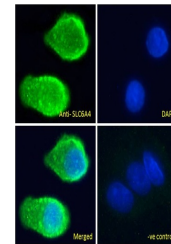
Product Datasheet

SRD5A1 Antibody (orb1248750)

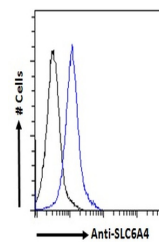
Description	SRD5A1 Antibody
Species/Host	Goat
Reactivity	Human
Conjugation	Unconjugated
Tested Applications	ELISA, IHC
Immunogen	The immunogen for this antibody is: C-RNLRKPGDTGYK
Target	SRD5A1
Preservatives	Supplied at 0.5 mg/ml in Tris saline, 0.02% sodium azide, pH 7.3 with 0.5% bovine serum albumin. Aliquot and store at -20°C. Minimize freezing and thawing.
Form/Appearance	Liquid
Concentration	500 ug/mL
Storage	Aliquot and store at -20°C. Minimize freezing and thawing.
Note	For research use only
Application notes	Peptide ELISA: antibody detection limit dilution 1:1000.Immunohistochemistry:Paraffin embedded Human Prostate, Liver and Small Intestine. Recommended concentration: 3.75ug/ml.
Clonality	Polyclonal
Uniprot ID	P18405
NCBI	NP_001038.1
Dilution Range	Peptide ELISA: antibody detection limit dilution 1:1000.Immunohistochemistry:Paraffin embedded Human Prostate, Liver and Small Intestine. Recommended concentration: 3.75ug/ml.
Expiration Date	12 months from date of receipt.



orb1248750
(3.75 ug/ml)
staining of para...



orb1248750
(3.75 ug/ml)
staining of para...



orb1248750
(3.75 ug/ml)
staining of para...