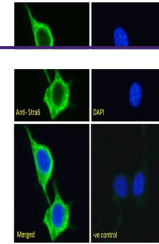

Product Datasheet

RCAN1 Antibody (orb1248717)

Description	RCAN1 Antibody
Species/Host	Goat
Reactivity	Mouse
Conjugation	Unconjugated
Tested Applications	ELISA, WB
Immunogen	The immunogen for this antibody is: C-HIGSSHLAPPNP
Target	RCAN1
Preservatives	Supplied at 0.5 mg/ml in Tris saline, 0.02% sodium azide, pH 7.3 with 0.5% bovine serum albumin. Aliquot and store at -20°C. Minimize freezing and thawing.
Form/Appearance	Liquid
Concentration	500 ug/mL
Storage	Aliquot and store at -20°C. Minimize freezing and thawing.
Note	For research use only
Application notes	Peptide ELISA: antibody detection limit dilution 1:32000. Western Blot: Approx 40kDa band corresponding to isoform 1L observed in Mouse Brain lysates and this band is not present in the KO mouse. Additional bands around 55kDa were consistently observed, however these band were also observed in the KO mice and therefore they represent non-specific signal. We call for caution when used for other assays than Western blot. Data kindly provided by Dana Crawford, PhD, Albany Medical College, NY, USA. Recommended concentration: 1-3ug/ml.
Clonality	Polyclonal
MW	Approx 40 kDa
Uniprot ID	P53805
NCBI	NP_004405.3 , NP_981963.1 , NP_981962.1
Dilution Range	Peptide ELISA: antibody detection limit dilution 1:32000. Western Blot: Approx 40kDa band corresponding to isoform 1L observed in Mouse Brain lysates and this band is not present in the KO mouse. Additional bands around 55kDa were consistently observed, however these band were also observed in the KO mice and therefore they represent non-specific signal. We call for caution when used for other assays than Western blot. Data kindly provided by Dana Crawford, PhD, Albany Medical College, NY, USA. Recommended concentration: 1-3ug/ml.



orb1248717
(1 ug/ml)
staining of
Mouse B...