

---

## Product Datasheet

### SH2D3A/NSP1 Antibody (orb1248611)

**Description**

SH2D3A/NSP1 Antibody

**Species/Host**

Goat

**Reactivity**

Human

**Conjugation**

Unconjugated

**Tested**

ELISA, IHC, WB

**Applications**
**Immunogen**

The immunogen for this antibody is: C-APRAERFEKFQR

**Target**

SH2D3A / NSP1

**Preservatives**

Supplied at 0.5 mg/ml in Tris saline, 0.02% sodium azide, pH 7.3 with 0.5% bovine serum albumin. Aliquot and store at -20°C. Minimize freezing and thawing.

**Form/Appearance**

Liquid

**Concentration**

500 ug/mL

**Storage**

Aliquot and store at -20°C. Minimize freezing and thawing.

**Note**

For research use only

**Application notes**

Peptide ELISA: antibody detection limit dilution 1:16000. Western Blot: Approx. 60kDa band observed in Human Lung and Tonsil lysates (calculated MW of 63.1kDa according to NP\_005481.2). Recommended concentration: 0.1-0.3ug/ml. Primary incubation was 1 hour. Immunohistochemistry: Paraffin embedded Human Colon. Recommended concentration: 5ug/ml.

**Clonality**

Polyclonal

**MW**

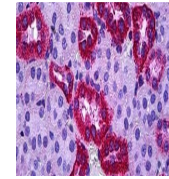
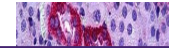
Approx 60kDa

**Uniprot ID**
[Q9BRG2](#)
**NCBI**
[NP\\_005481.2](#)
**Dilution Range**

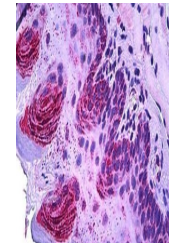
Peptide ELISA: antibody detection limit dilution 1:16000. Western Blot: Approx. 60kDa band observed in Human Lung and Tonsil lysates (calculated MW of 63.1kDa according to NP\_005481.2). Recommended concentration: 0.1-0.3ug/ml. Primary incubation was 1 hour. Immunohistochemistry: Paraffin embedded Human Colon. Recommended concentration: 5ug/ml.

**Expiration Date**

12 months from date of receipt.



orb1248611  
(0.1 ug/ml)  
staining of  
Human...



orb1248611  
(5 ug/ml)  
staining of  
paraffi...