
Product Datasheet

Glycine receptor, alpha 1 Antibody (orb1248511)

Description

Glycine receptor, alpha 1 Antibody


 250kDa
150kDa
100kDa

Species/Host

Goat


 50kDa
37kDa

Reactivity

Human, Mouse, Rat

 25kDa
20kDa

Conjugation

Unconjugated

15kDa

Tested

ELISA, IHC, WB

Applications

 orb1248511
(0.3 ug/ml)
staining of
Mouse...

Immunogen

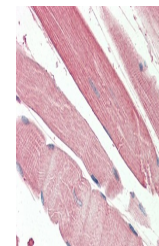
The immunogen for this antibody is: CLQAKDGISVKGAN

Target

Glycine receptor, alpha 1

Preservatives

Supplied at 0.5 mg/ml in Tris saline, 0.02% sodium azide, pH 7.3 with 0.5% bovine serum albumin. Aliquot and store at -20°C. Minimize freezing and thawing.


Form/Appearance

Liquid

Concentration

500 ug/mL

Storage

Aliquot and store at -20°C. Minimize freezing and thawing.


 orb1248511
(5 ug/ml)
staining of
paraffi...

Note

For research use only

Application notes

Peptide ELISA: antibody detection limit dilution 1:128000. Western Blot: Approx 60kDa band observed in Mouse and Rat Testis lysates (calculated MW of 51.7kDa according to Mouse NP_065238.2). The observed molecular weight corresponds to the glycosylated form. Recommended concentration: 0.3-1ug/ml. Primary incubation was 1 hour. Immunohistochemistry: Paraffin embedded Human Lung and Kidney. Recommended concentration: 5ug/ml.


 250kDa
150kDa
100kDa
75kDa
50kDa
37kDa
25kDa
20kDa
15kDa

 orb1248511
(5 ug/ml)
staining of
paraffi...

Clonality

Polyclonal

MW

Approx 60kDa

Uniprot ID
P23415
NCBI
NP_037265.1
Dilution Range

Peptide ELISA: antibody detection limit dilution 1:128000. Western Blot: Approx 60kDa band observed in Mouse and Rat Testis lysates (calculated MW of 51.7kDa according to Mouse NP_065238.2). The observed molecular weight corresponds to the glycosylated form. Recommended concentration: 0.3-1ug/ml. Primary incubation was 1 hour. Immunohistochemistry: Paraffin embedded Human Lung and Kidney. Recommended concentration: 5ug/ml.

Expiration Date

12 months from date of receipt