

---

## Product Datasheet

### kininogen 1 Antibody (orb1248301)

**Description**

kininogen 1 Antibody

 250kDa  
150kDa  
100kDa

**Species/Host**

Goat

 50kDa  
37kDa

**Reactivity**

Human

 25kDa  
20kDa

**Conjugation**

Unconjugated

15kDa

**Tested**

ELISA, IHC, WB

**Applications**

 orb1248301  
(0.3 ug/ml)  
staining of  
Human...

**Immunogen**

The immunogen for this antibody is: C-RITEATKTVGSDT

**Target**

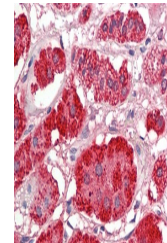
kininogen 1

**Preservatives**

Supplied at 0.5 mg/ml in Tris saline, 0.02% sodium azide, pH 7.3 with 0.5% bovine serum albumin. Aliquot and store at -20°C. Minimize freezing and thawing.

**Form/Appearance**

Liquid


**Concentration**

500 ug/mL

**Storage**

Aliquot and store at -20°C. Minimize freezing and thawing.

**Note**

For research use only

 orb1248301  
(5 ug/ml)  
staining of  
paraffi...

**Application notes**

Peptide ELISA: antibody detection limit dilution 1:128000. Western Blot: Approx 80+60+30kDa bands observed in Human Kidney lysates (calculated MW of 72.0kDa according to NP\_001095886.1). The observed MW bands are explained by glycosylation and the splitting into heavy and light chains from the precursor protein. Recommended concentration: 0.3-1ug/ml. Primary incubation was 1 hour. Immunohistochemistry: Paraffin embedded Human Liver. Recommended concentration: 5ug/ml.

**Clonality**

Polyclonal

**MW**

Approx 80 + 60 + 30kDa

**Uniprot ID**
[P01042](#)
**NCBI**
[NP\\_001095886.1](#), [NP\\_001159923.1](#), [NP\\_000884.1](#)
**Dilution Range**

Peptide ELISA: antibody detection limit dilution 1:128000. Western Blot: Approx 80+60+30kDa bands observed in Human Kidney lysates (calculated MW of 72.0kDa according to NP\_001095886.1). The observed MW bands are explained by glycosylation and the splitting into heavy and light chains from the precursor protein. Recommended concentration: 0.3-1ug/ml. Primary incubation was 1 hour. Immunohistochemistry: Paraffin embedded Human Liver. Recommended concentration: 5ug/ml.