
Product Datasheet

contactin 1 Antibody (orb1248275)

Description

contactin 1 Antibody

Species/Host

Goat

Reactivity

Human, Mouse, Rat

Conjugation

Unconjugated

Tested

ELISA, IHC, WB

Applications
Immunogen

The immunogen for this antibody is: C-QVTSQEYSARLEN

Target

contactin 1

Preservatives

Supplied at 0.5 mg/ml in Tris saline, 0.02% sodium azide, pH 7.3 with 0.5% bovine serum albumin. Aliquot and store at -20°C. Minimize freezing and thawing.

Form/Appearance

Liquid

Concentration

500 ug/mL

Storage

Aliquot and store at -20°C. Minimize freezing and thawing.

Note

For research use only

Application notes

Peptide ELISA: antibody detection limit dilution 1:16000. Western Blot: Approx 140kDa band observed in Mouse Brain, and approx 150kDa observed in Human and Rat Brain lysates (calculated MW of 113kDa according to according to Human, NP_001834.2, Mouse NP_031753.1 and Rat NP_476459.1). The observed molecular weight corresponds to the glycosylated form. Recommended concentration: 0.3-1ug/ml. Immunohistochemistry: Paraffin embedded Human Brain (Cerebellum) and Mouse Brain (Cerebral Cortex). Recommended concentration: 5ug/ml.

Clonality

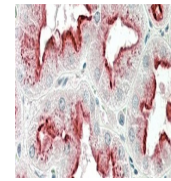
Polyclonal

MW

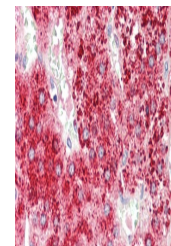
Approx 150kDa

Uniprot ID
[Q12860](#)
NCBI
[NP_001834.2](#), [NP_778203.1](#)
Dilution Range

Peptide ELISA: antibody detection limit dilution 1:16000. Western Blot: Approx 140kDa band observed in Mouse Brain, and approx 150kDa observed in Human and Rat Brain lysates (calculated MW of 113kDa according to according to Human, NP_001834.2, Mouse NP_031753.1 and Rat NP_476459.1). The observed molecular weight corresponds to the glycosylated form. Recommended concentration: 0.3-1ug/ml. Immunohistochemistry: Paraffin embedded Human Brain (Cerebellum) and Mouse Brain (Cerebral Cortex). Recommended concentration: 5ug/ml.



orb1248275
(1 ug/ml)
staining of
Human C...



orb1248275
(5 ug/ml)
staining of
paraffi...



orb1248275
(1 ug/ml)
staining of
Mouse (...)