
Product Datasheet

Thrombospondin Antibody (orb1248272)

Description

Thrombospondin Antibody

Species/Host

Goat

Reactivity

Human, Mouse

Conjugation

Unconjugated

Tested

ELISA, FC, IF, IHC, WB

Applications
Immunogen

The immunogen for this antibody is: NRIPESGGDNSVFD-C

Target

Thrombospondin

Preservatives

Supplied at 0.5 mg/ml in Tris saline, 0.02% sodium azide, pH 7.3 with 0.5% bovine serum albumin. Aliquot and store at -20°C. Minimize freezing and thawing.

Form/Appearance

Liquid

Concentration

500 ug/mL

Storage

Aliquot and store at -20°C. Minimize freezing and thawing.

Note

For research use only

Application notes

Peptide ELISA: antibody detection limit dilution 1:128000. Western Blot: Approx 150kDa band observed in Mouse Kidney lysates (calculated MW of 129kDa according to NP_035710.2). Recommended concentration: 0.3-1ug/ml. Primary incubation 1 hour at room temperature. Immunohistochemistry: Paraffin embedded Human Spleen. Recommended concentration: 5ug/ml. Immunofluorescence: Strong expression of the protein seen in the cytoplasm of HeLa and HepG2 cells. Recommended concentration: 10ug/ml. Flow Cytometry: Flow cytometric analysis of A431 cells. Recommended concentration: 10ug/ml.

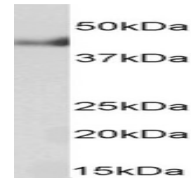
Clonality

Polyclonal

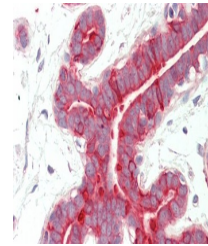
Uniprot ID
P07996
NCBI
NP_003237.2
Dilution Range

Peptide ELISA: antibody detection limit dilution 1:128000. Western Blot: Approx 150kDa band observed in Mouse Kidney lysates (calculated MW of 129kDa according to NP_035710.2). Recommended concentration: 0.3-1ug/ml. Primary incubation 1 hour at room temperature. Immunohistochemistry: Paraffin embedded Human Spleen. Recommended concentration: 5ug/ml. Immunofluorescence: Strong expression of the protein seen in the cytoplasm of HeLa and HepG2 cells. Recommended concentration: 10ug/ml. Flow Cytometry:

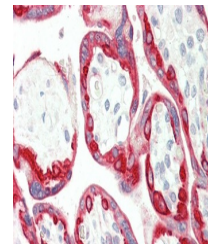

 250kDa
150kDa
100kDa


 50kDa
37kDa
25kDa
20kDa
15kDa

orb1248272 (1 ug/ml) staining of Mouse K...



orb1248272 Immunofluorescence analysis o...



orb1248272 Immunofluorescence analysis o...