

Product Datasheet

HNRNPA2B1 Antibody (orb1248243)

Description

HNRNPA2B1 Antibody

Species/Host

Goat

Reactivity

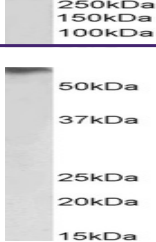
Human, Mouse

Conjugation

Unconjugated

Tested

ELISA, IHC, WB

Applications


orb1248243
(0.3 ug/ml)
staining of
MCF7 ...

Immunogen

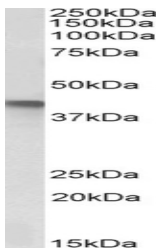
The immunogen for this antibody is: C-DTIEIITDRQS

Target

HNRNPA2B1

Preservatives

Supplied at 0.5 mg/ml in Tris saline, 0.02% sodium azide, pH 7.3 with 0.5% bovine serum albumin. Aliquot and store at -20°C. Minimize freezing and thawing.



orb1248243
(5 ug/ml)
staining of
paraffi...

Form/Appearance

Liquid

Concentration

500 ug/mL

Storage

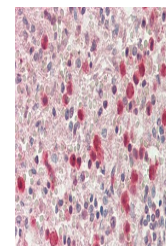
Aliquot and store at -20°C. Minimize freezing and thawing.

Note

For research use only

Application notes

Peptide ELISA: antibody detection limit dilution 1:64000. Western Blot: Approx 37kDa band observed in lysates of cell line MCF7 and approx. 35kDa in lysates of cell line NIH3T3 and nuclear NIH3T3 (calculated MW of 36.0kDa according to NP_002128.1). An additional band of unknown identity was also consistently observed at 30kDa. This band was successfully blocked by incubation with the immunising peptide. Recommended concentration: 0.01-0.3ug/ml. Primary incubation 1 hour at room temperature. Immunohistochemistry: In paraffin embedded Human Small Intestine shows nuclear staining. Paraffin embedded Human Testis. Recommended concentration: 5ug/ml. Additional validation: This antibody has been successfully used in the following paper: Sikorski et al. (2018) PMID: 30377371.



orb1248243
(5 ug/ml)
staining of
paraffi...

Clonality

Polyclonal

MW

Approx 36kDa

Uniprot ID
[P22626](#)
NCBI
[NP_112533.1](#), [NP_002128.1](#)
Dilution Range

Peptide ELISA: antibody detection limit dilution 1:64000. Western Blot: Approx 37kDa band observed in lysates of cell line MCF7 and approx. 35kDa in lysates of cell line NIH3T3 and nuclear NIH3T3 (calculated MW of 36.0kDa according to NP_002128.1). An additional band of unknown