

---

## Product Datasheet

### MSI2/musashi-2 Antibody (orb1248128)

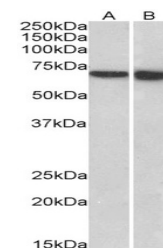
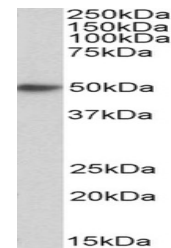
<b>Description</b>	MSI2/musashi-2 Antibody
<b>Species/Host</b>	Goat
<b>Reactivity</b>	Human, Mouse
<b>Conjugation</b>	Unconjugated
<b>Tested Applications</b>	ELISA, IHC, WB
<b>Immunogen</b>	The immunogen for this antibody is: C-SPDSLRYFSK
<b>Target</b>	MSI2 / musashi-2
<b>Preservatives</b>	Supplied at 0.5 mg/ml in Tris saline, 0.02% sodium azide, pH 7.3 with 0.5% bovine serum albumin. Aliquot and store at -20°C. Minimize freezing and thawing.
<b>Form/Appearance</b>	Liquid
<b>Concentration</b>	500 ug/mL
<b>Storage</b>	Aliquot and store at -20°C. Minimize freezing and thawing.
<b>Note</b>	For research use only
<b>Application notes</b>	Peptide ELISA: antibody detection limit dilution 1:128000. Western Blot: Approx 37kDa band observed in lysates of cell line Kelly (calculated MW of 35.2kDa according to NP_620412.1). Recommended concentration: 0.1-0.3ug/ml. Approx 37+39kDa bands observed in fetal Mouse Brain lysates (calculated MW of 36.9kDa according to Mouse NP_473384.1). The observed molecular weights correspond to earlier findings with different antibodies from other commercial sources. Recommended concentration: 0.3-1ug/ml. Primary incubation was 1 hour. Immunohistochemistry: Paraffin embedded Human Adrenal Gland. Recommended concentration: 5ug/ml.
<b>Clonality</b>	Polyclonal
<b>MW</b>	Approx 37kDa
<b>Uniprot ID</b>	<a href="#">Q96DH6</a>
<b>NCBI</b>	<a href="#">NP_620412.1</a> , <a href="#">NP_733839.1</a>
<b>Dilution Range</b>	Peptide ELISA: antibody detection limit dilution 1:128000. Western Blot: Approx 37kDa band observed in lysates of cell line Kelly (calculated MW of 35.2kDa according to NP_620412.1). Recommended concentration: 0.1-0.3ug/ml. Approx 37+39kDa bands observed in fetal Mouse Brain lysates (calculated MW of 36.9kDa according to Mouse NP_473384.1). The observed molecular weights correspond to earlier findings with different antibodies



orb1248128  
(0.1 ug/ml)  
staining of  
Kelly...



orb1248128  
(0.3 ug/ml)  
staining of  
fetal...



orb1248128  
(5 ug/ml)  
staining of  
paraffi...