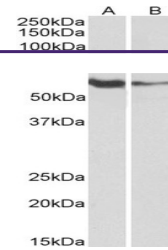

Product Datasheet

FCRL1 Antibody (orb1248083)

| | |
|----------------------------|--|
| Description | FCRL1 Antibody |
| Species/Host | Goat |
| Reactivity | Human |
| Conjugation | Unconjugated |
| Tested Applications | ELISA, WB |
| Immunogen | The immunogen for this antibody is: C-SRLRKANITDVD |
| Target | FCRL1 |
| Preservatives | Supplied at 0.5 mg/ml in Tris saline, 0.02% sodium azide, pH 7.3 with 0.5% bovine serum albumin. Aliquot and store at -20°C. Minimize freezing and thawing. |
| Form/Appearance | Liquid |
| Concentration | 500 ug/mL |
| Storage | Aliquot and store at -20°C. Minimize freezing and thawing. |
| Note | For research use only |
| Application notes | Peptide ELISA: antibody detection limit dilution 1:64000. Western Blot: Approx 55+48kDa bands observed in Human Tonsil and Thymus lysates (calculated MW of 46.9kDa according to NP_443170.1). The observed molecular weights correspond to the glycosylated forms. Recommended concentration: 0.3-1ug/ml. |
| Clonality | Polyclonal |
| MW | Approx 55 + 48kDa |
| Uniprot ID | Q96LA6 |
| NCBI | NP_443170.1 , NP_001152870.1 |
| Dilution Range | Peptide ELISA: antibody detection limit dilution 1:64000. Western Blot: Approx 55+48kDa bands observed in Human Tonsil and Thymus lysates (calculated MW of 46.9kDa according to NP_443170.1). The observed molecular weights correspond to the glycosylated forms. Recommended concentration: 0.3-1ug/ml. |
| Expiration Date | 12 months from date of receipt. |



orb1248083
(0.5 ug/ml)
staining of
Human...