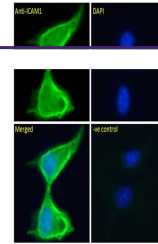

Product Datasheet

FCRL1 Antibody (orb1248081)

Description	FCRL1 Antibody
Species/Host	Goat
Reactivity	Human
Conjugation	Unconjugated
Tested Applications	ELISA, WB
Immunogen	The immunogen for this antibody is: C-TAEYEIPSVRES
Target	FCRL1
Preservatives	Supplied at 0.5 mg/ml in Tris saline, 0.02% sodium azide, pH 7.3 with 0.5% bovine serum albumin. Aliquot and store at -20°C. Minimize freezing and thawing.
Form/Appearance	Liquid
Concentration	500 ug/mL
Storage	Aliquot and store at -20°C. Minimize freezing and thawing.
Note	For research use only
Application notes	Peptide ELISA: antibody detection limit dilution 1:64000. Western Blot: Approx 45 + 40kDa bands observed in Human Heart lysates and 38kDa in Human Liver lysates (calculated MW of 46.9kDa according to NP_443170.1 and of 40.4kDa according to NP_001152869.1). Recommended concentration: 0.3-1ug/ml.
Clonality	Polyclonal
MW	Approx 45 + 40kDa
Uniprot ID	Q96LA6
NCBI	NP_443170.1 , NP_001152870.1 , NP_001152869.1
Dilution Range	Peptide ELISA: antibody detection limit dilution 1:64000. Western Blot: Approx 45 + 40kDa bands observed in Human Heart lysates and 38kDa in Human Liver lysates (calculated MW of 46.9kDa according to NP_443170.1 and of 40.4kDa according to NP_001152869.1). Recommended concentration: 0.3-1ug/ml.
Expiration Date	12 months from date of receipt.



orb1248081
(0.3 ug/ml)
staining of
Human...