

---

## Product Datasheet

### DC-SIGN/CD209 Antibody (orb1248043)

**Description**

DC-SIGN/CD209 Antibody

**Species/Host**

Goat

**Reactivity**

Human

**Conjugation**

Unconjugated

**Tested**

ELISA, WB

**Applications**
**Immunogen**

The immunogen for this antibody is: C-NRGEPNNVGEED

**Target**

DC-SIGN / CD209

**Preservatives**

Supplied at 0.5 mg/ml in Tris saline, 0.02% sodium azide, pH 7.3 with 0.5% bovine serum albumin. Aliquot and store at -20°C. Minimize freezing and thawing.

**Form/Appearance**

Liquid

**Concentration**

500 ug/mL

**Storage**

Aliquot and store at -20°C. Minimize freezing and thawing.

**Note**

For research use only

**Application notes**

Peptide ELISA: antibody detection limit dilution 1:128000. Western Blot: Approx 50kDa band observed in Human Bone Marrow lysates (calculated MW of 45.8kDa according to NP\_066978.1). The observed molecular weight corresponds to the glycosylated form. Recommended concentration: 0.1-0.3ug/ml.

**Clonality**

Polyclonal

**MW**

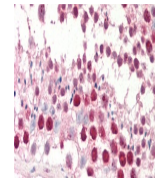
Approx 50kDa

**Uniprot ID**
[Q9NNX6](#)
**NCBI**
[NP\\_001138368.1](#), [NP\\_066978.1](#), [NP\\_001138366.1](#), [NP\\_001138371.1](#), [NP\\_001138365.1](#), [NP\\_001138367.1](#), [NP\\_001138369.1](#)
**Dilution Range**

Peptide ELISA: antibody detection limit dilution 1:128000. Western Blot: Approx 50kDa band observed in Human Bone Marrow lysates (calculated MW of 45.8kDa according to NP\_066978.1). The observed molecular weight corresponds to the glycosylated form. Recommended concentration: 0.1-0.3ug/ml.

**Expiration Date**

12 months from date of receipt.


 orb1248043  
(0.3 ug/ml)  
staining of  
Human...