
Product Datasheet

AMPH Antibody (orb1248023)

Description

AMPH Antibody

Species/Host

Goat

Reactivity

Human, Mouse

Conjugation

Unconjugated

Tested

ELISA, IHC, WB

Applications
Immunogen

The immunogen for this antibody is: C-KRKDESRISKAE

Target

AMPH

Preservatives

Supplied at 0.5 mg/ml in Tris saline, 0.02% sodium azide, pH 7.3 with 0.5% bovine serum albumin. Aliquot and store at -20°C. Minimize freezing and thawing.

Form/Appearance

Liquid

Concentration

500 ug/mL

Storage

Aliquot and store at -20°C. Minimize freezing and thawing.

Note

For research use only

Application notes

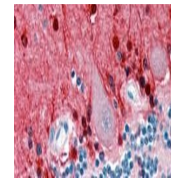
Peptide ELISA: antibody detection limit dilution 1:16000. Western Blot: Approx 125kDa band observed in mouse brain lysates (calculated MW of 76.3kDa according to NP_001626.1). The observed molecular weight corresponds to earlier findings in literature with different antibodies (Wigge et al, Mol Biol Cell. 1997 Oct;8(10):2003-15.; PMID: 9348539). Recommended concentration: 0.1-0.5ug/ml. A minor band of unknown identity was also consistently observed at 45kDa. This band was successfully blocked by incubation with the immunising peptide. We would appreciate any feedback from people in the field - have any results been reported with other antibodies/lysates? Have any further splice variants/modified forms been reported? Immunohistochemistry: In paraffin embedded Human Cerebellum shows nuclear and fibrous staining. Recommended concentration, 2-4ug/ml.

Clonality

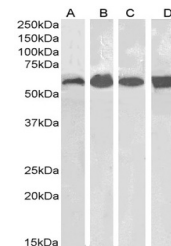
Polyclonal

Uniprot ID
[P49418](#)
NCBI
[NP_001626.1](#), [NP_647477.1](#)
Dilution Range

Peptide ELISA: antibody detection limit dilution 1:16000. Western Blot: Approx 125kDa band observed in mouse brain lysates (calculated MW of 76.3kDa according to NP_001626.1). The observed molecular weight corresponds to earlier findings in literature with different antibodies (Wigge et al, Mol Biol Cell. 1997 Oct;8(10):2003-15.; PMID:



orb1248023
(0.5 ug/ml)
staining of
mouse...



orb1248023
(2.5 ug/ml)
staining of
paraf...