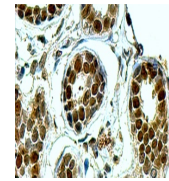
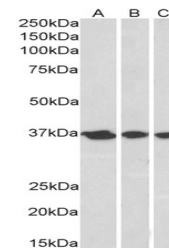

Product Datasheet

APEX1 Antibody (orb1248020)

Description	APEX1 Antibody
Species/Host	Goat
Reactivity	Human
Conjugation	Unconjugated
Tested Applications	ELISA, IHC, WB
Immunogen	The immunogen for this antibody is: PKRGKKGAVAEDGD-C
Target	APEX1
Preservatives	Supplied at 0.5 mg/ml in Tris saline, 0.02% sodium azide, pH 7.3 with 0.5% bovine serum albumin. Aliquot and store at -20°C. Minimize freezing and thawing.
Form/Appearance	Liquid
Concentration	500 ug/mL
Storage	Aliquot and store at -20°C. Minimize freezing and thawing.
Note	For research use only
Application notes	Peptide ELISA: antibody detection limit dilution 1:16000. Western Blot: Approx 37kDa band observed in nuclear lysates of cell lines A431, HeLa and MCF7 (calculated MW of 35.6kDa according to NP_001632.2, NP_542379.1 and NP_542380.1). Recommended concentration: 0.1-0.3ug/ml. Immunohistochemistry: In paraffin embedded Human Breast shows nuclear staining of lobular epithelial cells. Recommended concentration: 4-6ug/ml. Additional validation: This antibody has been successfully used in the following paper: Sikorski et al. (2018) PMID: 30377371.
Clonality	Polyclonal
Uniprot ID	P27695
NCBI	NP_001632.2
Dilution Range	Peptide ELISA: antibody detection limit dilution 1:16000. Western Blot: Approx 37kDa band observed in nuclear lysates of cell lines A431, HeLa and MCF7 (calculated MW of 35.6kDa according to NP_001632.2, NP_542379.1 and NP_542380.1). Recommended concentration: 0.1-0.3ug/ml. Immunohistochemistry: In paraffin embedded Human Breast shows nuclear staining of lobular epithelial cells. Recommended concentration: 4-6ug/ml. Additional validation: This antibody has been successfully used in the following paper: Sikorski et al. (2018) PMID: 30377371.
Expiration Date	12 months from date of receipt.



orb1248020
(4 ug/ml)
staining of
paraffi...



orb1248020
(0.3 ug/ml)
staining of
A431 ...