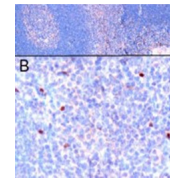
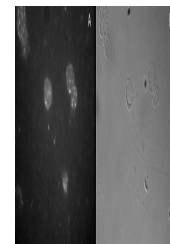

Product Datasheet

FOXP3 Antibody (orb1247977)

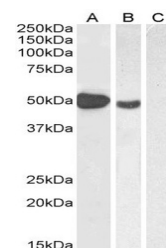
Description	FOXP3 Antibody
Species/Host	Goat
Reactivity	Human
Conjugation	Unconjugated
Tested Applications	ELISA, FC, ICC, IF, WB
Immunogen	The immunogen for this antibody is: SQRPSRCSNPTPGP
Target	FOXP3
Preservatives	Supplied at 0.5 mg/ml in Tris saline, 0.02% sodium azide, pH 7.3 with 0.5% bovine serum albumin. Aliquot and store at -20°C. Minimize freezing and thawing.
Form/Appearance	Liquid
Concentration	500 ug/mL
Storage	Aliquot and store at -20°C. Minimize freezing and thawing.
Note	For research use only
Application notes	<p>Peptide ELISA: antibody detection limit dilution 1:8000. Western Blot: Approx 48-50kDa band observed in Human Muscle lysates and in lysates of cell line MOLT4 (calculated MW of 47.2kDa according to NP_054728.2). Recommended concentration: 1-3ug/ml. Primary incubation 1 hour at room temperature. Negative Control: Human Pancreas lysate. Immunofluorescence: Strong expression of the protein seen in the nucleoplasm of U2OS cells. Recommended concentration: 10ug/ml. Flow Cytometry: Flow cytometric analysis of Jurkat cells. Recommended concentration: 10ug/ml. Immunocytochemistry: CD25-sorted (Treg) Human blood cells with nuclear speckled staining. Recommended concentration 2-4ug/ml for overnight staining.</p>
Clonality	Polyclonal
Uniprot ID	Q9BZS1
NCBI	NP_054728.2 , NP_001107849.1
Dilution Range	<p>Peptide ELISA: antibody detection limit dilution 1:8000. Western Blot: Approx 48-50kDa band observed in Human Muscle lysates and in lysates of cell line MOLT4 (calculated MW of 47.2kDa according to NP_054728.2). Recommended concentration: 1-3ug/ml. Primary incubation 1 hour at room temperature. Negative Control: Human Pancreas lysate. Immunofluorescence: Strong expression of the protein seen in the nucleoplasm of U2OS cells.</p>



orb1247977
(1 ug/ml)
staining of
paraffi...



orb1247977
staining of
CD25-sorted
(Treg...



orb1247977
(1 ug/ml)
staining of
Human M...