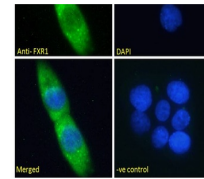
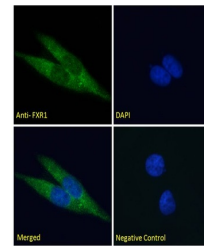

Product Datasheet

FXR1 Antibody (orb1247974)

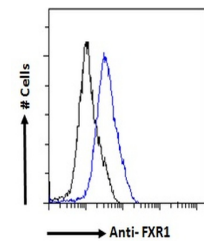
Description	FXR1 Antibody
Species/Host	Goat
Reactivity	Human, Mouse
Conjugation	Unconjugated
Tested Applications	ELISA, FC, IF, WB
Immunogen	The immunogen for this antibody is: C-RIEGDNENKLPRED
Target	FXR1
Preservatives	Supplied at 0.5 mg/ml in Tris saline, 0.02% sodium azide, pH 7.3 with 0.5% bovine serum albumin. Aliquot and store at -20°C. Minimize freezing and thawing.
Form/Appearance	Liquid
Concentration	500 ug/mL
Storage	Aliquot and store at -20°C. Minimize freezing and thawing.
Note	For research use only
Application notes	<p>Peptide ELISA: antibody detection limit dilution 1:128000. Western Blot: Approx 75+80kDa band observed in lysates of cell line NIH-3T3 (calculated MW of 59.9kDa according to NP_001013457.1). The observed molecular weight corresponds to earlier findings in literature (Khandjian et al Hum Mol Genet. 1998 Dec;7(13):2121-8.; PMID: 9817930). An additional band of unknown identity was also consistently observed at 37kDa. This band was successfully blocked by incubation with the immunizing peptide. Recommended concentration. 1-3ug/ml. Primary incubation 1 hour at room temperature. Immunofluorescence: Strong expression of the protein seen in the cytoplasm of A431 and HeLa cells. Recommended concentration: 10ug/ml. Flow Cytometry: Flow cytometric analysis of HeLa cells. Recommended concentration: 10ug/ml.</p>
Clonality	Polyclonal
Uniprot ID	P51114
NCBI	NP_005078.2 , NP_001013457.1 , NP_001013456.1
Dilution Range	Peptide ELISA: antibody detection limit dilution 1:128000. Western Blot: Approx 75+80kDa band observed in lysates of cell line NIH-3T3 (calculated MW of 59.9kDa according to NP_001013457.1). The observed molecular weight corresponds to earlier findings in literature



orb1247974 (1 ug/ml) staining of NIH-3T3...



orb1247974 Immunofluorescence analysis o...



orb1247974 Immunofluorescence analysis o...