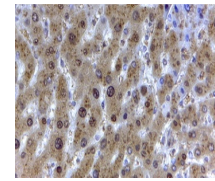
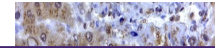
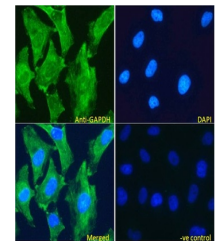

Product Datasheet

GAPDH Antibody (orb1247971)

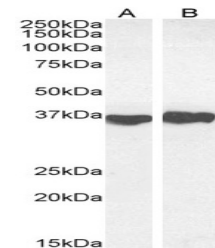
Description	GAPDH Antibody
Species/Host	Goat
Reactivity	Human, Mouse, Rat
Conjugation	Unconjugated
Tested Applications	ELISA, IF, IHC, WB
Immunogen	The immunogen for this antibody is: C-GVNHEKYDNSLK
Target	GAPDH
Preservatives	Supplied at 0.5 mg/ml in Tris saline, 0.02% sodium azide, pH 7.3 with 0.5% bovine serum albumin. Aliquot and store at -20°C. Minimize freezing and thawing.
Form/Appearance	Liquid
Concentration	500 ug/mL
Storage	Aliquot and store at -20°C. Minimize freezing and thawing.
Note	For research use only
Application notes	Peptide ELISA: antibody detection limit dilution 1:16000. Western Blot: Approx 37kDa band observed in Human Liver, Testis and Tonsil, and in Mouse Liver and Rat Heart lysates, and in cell lysates of HeLa and NIH3T3 (calculated MW of 36.1kDa according to Human NP_002037.2, Mouse NP_032110.1, and Rat NP_058704.1). Recommended concentration: 0.03-0.1ug/ml. Primary incubation 1 hour at room temperature. This product has been successfully used in WB on Human: PMID: 29953622 and PMID: 29158223. Immunohistochemistry: In paraffin embedded Human Liver shows textured cytoplasm staining in hepatocytes. Recommended concentration: 2ug/ml. Immunofluorescence: Strong expression of the protein seen in the cytoplasm of U251 and HeLa cells. Recommended concentration: 5-10ug/ml.
Clonality	Polyclonal
Uniprot ID	P04406
NCBI	NP_002037.2 , NP_001243728.1
Dilution Range	Peptide ELISA: antibody detection limit dilution 1:16000. Western Blot: Approx 37kDa band observed in Human Liver, Testis and Tonsil, and in Mouse Liver and Rat Heart lysates, and in cell lysates of HeLa and NIH3T3 (calculated MW of 36.1kDa according to Human



orb1247971 (0.1 ug/ml) staining of Human...



orb1247971 (2 ug/ml) staining of paraffi...



orb1247971 Immunofluorescence analysis o...