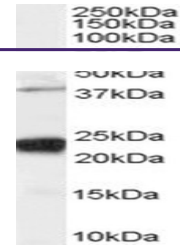
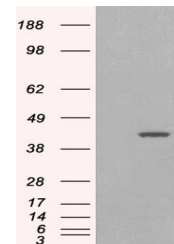

Product Datasheet

GIPC1 Antibody (orb1247968)

Description	GIPC1 Antibody
Species/Host	Goat
Reactivity	Human
Conjugation	Unconjugated
Tested Applications	ELISA, WB
Immunogen	The immunogen for this antibody is: C-GAIGDAKVGRY
Target	GIPC1
Preservatives	Supplied at 0.5 mg/ml in Tris saline, 0.02% sodium azide, pH 7.3 with 0.5% bovine serum albumin. Aliquot and store at -20°C. Minimize freezing and thawing.
Form/Appearance	Liquid
Concentration	500 ug/mL
Storage	Aliquot and store at -20°C. Minimize freezing and thawing.
Note	For research use only
Application notes	Peptide ELISA: antibody detection limit dilution 1:128000. Western Blot: Approx 38kDa and strong 23-24kDa bands observed in lysates of cell line HeLa, and approx 24kDa also observed in Human Pancreas, Kidney and Muscle lysates (calculated MW of 36.0kDa according to NP_005707.1, NP_974197.1 and NP_974199.1 and 26.1kDa according to NP_974198.1 and NP_974223.1). In transfected HEK293 transiently expressing GIPC1 isoform 1 a band of approx. 40kDa is observed. This band is not observed in the non-transfected HEK293. Recommended concentration: 0.03-0.1ug/ml.
Clonality	Polyclonal
Uniprot ID	O14908
NCBI	NP_974223.1 , NP_005707.1 , NP_974199.1 , NP_974196.1 , NP_974197.1 , NP_974198.1
Dilution Range	Peptide ELISA: antibody detection limit dilution 1:128000. Western Blot: Approx 38kDa and strong 23-24kDa bands observed in lysates of cell line HeLa, and approx 24kDa also observed in Human Pancreas, Kidney and Muscle lysates (calculated MW of 36.0kDa according to NP_005707.1, NP_974197.1 and NP_974199.1 and 26.1kDa according to NP_974198.1 and NP_974223.1). In transfected HEK293 transiently expressing GIPC1 isoform 1 a band of approx. 40kDa is observed. This band is not observed in the non-transfected HEK293. Recommended



orb1247968 staining (0.03 ug/ml) of Huma...



HEK293 overexpressing GIPC1 isoform 1 an...