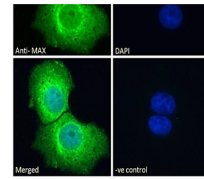
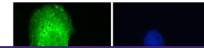


---

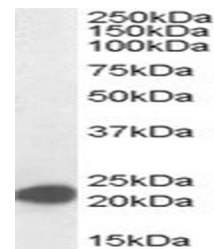
## Product Datasheet

### MAX Antibody (orb1247944)

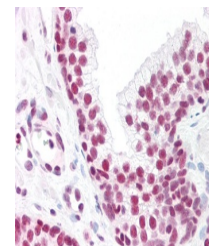
|                            |  |
|----------------------------|--|
| <b>Description</b>         | MAX Antibody   |
| <b>Species/Host</b>        | Goat   |
| <b>Reactivity</b>          | Human  |
| <b>Conjugation</b>         | Unconjugated   |
| <b>Tested Applications</b> | ELISA, IF, IHC, WB   |
| <b>Immunogen</b>           | The immunogen for this antibody is: C-EEPQSRKKLRMEAS   |
| <b>Target</b>              | MAX  |
| <b>Preservatives</b>       | Supplied at 0.5 mg/ml in Tris saline, 0.02% sodium azide, pH 7.3 with 0.5% bovine serum albumin. Aliquot and store at -20°C. Minimize freezing and thawing.  |
| <b>Form/Appearance</b>     | Liquid   |
| <b>Concentration</b>       | 500 ug/mL  |
| <b>Storage</b>             | Aliquot and store at -20°C. Minimize freezing and thawing.   |
| <b>Note</b>                | For research use only  |
| <b>Application notes</b>   | Peptide ELISA: antibody detection limit dilution 1:32000. Western Blot: Approx 22kDa band observed in lysates of cell line Jurkat (calculated MW of 18.3kDa according to NP_002373.3). Recommended concentration: 0.01-0.03ug/ml. Primary incubation 1 hour at room temperature. Immunohistochemistry: Paraffin embedded Human Prostate. Recommended concentration: 10ug/ml. Immunofluorescence: Expression of the protein seen in the cytoplasm and nuclei of A431 and U251 cells. Recommended concentration: 10ug/ml. Additional validation: This antibody has been successfully used in the following paper: Sikorski et al. (2018) PMID: 30377371. |
| <b>Clonality</b>           | Polyclonal   |
| <b>Uniprot ID</b>          | <a href="#">P61244</a>   |
| <b>NCBI</b>                | <a href="#">NP_002373.3</a> , <a href="#">NP_660087.1</a>  |
| <b>Dilution Range</b>      | Peptide ELISA: antibody detection limit dilution 1:32000. Western Blot: Approx 22kDa band observed in lysates of cell line Jurkat (calculated MW of 18.3kDa according to NP_002373.3). Recommended concentration: 0.01-0.03ug/ml. Primary incubation 1 hour at room temperature. Immunohistochemistry: Paraffin embedded Human Prostate. Recommended concentration: 10ug/ml. Immunofluorescence: Expression of the protein seen in the cytoplasm and nuclei of A431 and U251 cells. Recommended concentration: 10ug/ml. Additional   |



orb1247944  
Immunofluorescence  
analysis o...



orb1247944 (0.01  
ug/ml) staining of  
Jurk...



orb1247944 (10  
ug/ml) staining of  
paraff...