

---

## Product Datasheet

### PPP2R1A Antibody (orb1247915)

**Description**

PPP2R1A Antibody

**Species/Host**

Goat

**Reactivity**

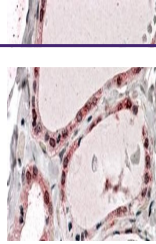
Human

**Conjugation**

Unconjugated

**Tested**

ELISA, WB

**Applications**


orb1247915  
(2 ug/ml)  
staining of  
Human T...

**Immunogen**

The immunogen for this antibody is: C-KYFAQEALTVLSLA

**Target**

PPP2R1A

**Preservatives**

Supplied at 0.5 mg/ml in Tris saline, 0.02% sodium azide, pH 7.3 with 0.5% bovine serum albumin. Aliquot and store at -20°C. Minimize freezing and thawing.

**Form/Appearance**

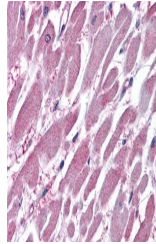
Liquid

**Concentration**

500 ug/mL

**Storage**

Aliquot and store at -20°C. Minimize freezing and thawing.



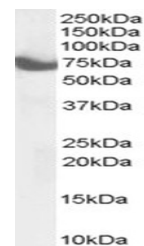
orb1247915  
(3.75 ug/ml)  
staining of  
para...

**Note**

For research use only

**Application notes**

Peptide ELISA: antibody detection limit dilution 1:4000. Western Blot: Approx 60-65kDa band observed in Human Thymus and Human Lymph node lysates (calculated MW of 65.3kDa according to NP\_055040.2). Recommended concentration: 2-6ug/ml.


**Clonality**

Polyclonal

**Uniprot ID**
[P30153](#)
**NCBI**
[NP\\_055040.2](#)

orb1247915  
(3.75 ug/ml)  
staining of  
para...

**Dilution Range**

Peptide ELISA: antibody detection limit dilution 1:4000. Western Blot: Approx 60-65kDa band observed in Human Thymus and Human Lymph node lysates (calculated MW of 65.3kDa according to NP\_055040.2). Recommended concentration: 2-6ug/ml.

**Expiration Date**

12 months from date of receipt.