
Product Datasheet

RBP1 Antibody (orb1247901)

Description

RBP1 Antibody

Species/Host

Goat

Reactivity

Human, Mouse

Conjugation

Unconjugated

Tested

ELISA, FC, IF, WB

Applications
Immunogen

The immunogen for this antibody is: VEGVVCKQVFKKVQ

Target

RBP1

Preservatives

Supplied at 0.5 mg/ml in Tris saline, 0.02% sodium azide, pH 7.3 with 0.5% bovine serum albumin. Aliquot and store at -20°C. Minimize freezing and thawing.

Form/Appearance

Liquid

Concentration

500 ug/mL

Storage

Aliquot and store at -20°C. Minimize freezing and thawing.

Note

For research use only

Application notes

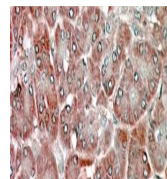
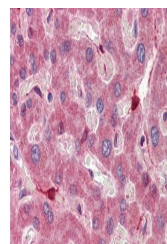
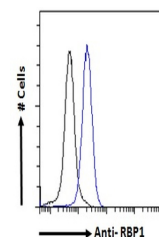
Peptide ELISA: antibody detection limit dilution 1:4000. Western Blot: Approx 16kDa band observed in NIH3T3 and approx 17kDa in U251 cell lysates. The observed molecular weight corresponds to earlier findings with different antibodies from other commercial sources. (calculated MW of 22.3kDa according to Human NP_002890.2 and 15.8kDa according to Mouse NP_035384.1). Recommended concentration: 0.5-3ug/ml. Primary incubation 1 hour at room temperature. Immunofluorescence: Expression of the protein seen in the cytoplasm and nucleus of U2OS cells. Recommended concentration: 10ug/ml. Flow Cytometry: Flow cytometric analysis of HeLa cells. Recommended concentration: 10ug/ml.

Clonality

Polyclonal

Uniprot ID
P09455
NCBI
NP_002890.2
Dilution Range

Peptide ELISA: antibody detection limit dilution 1:4000. Western Blot: Approx 16kDa band observed in NIH3T3 and approx 17kDa in U251 cell lysates. The observed molecular weight corresponds to earlier findings with different antibodies from other commercial sources. (calculated MW of 22.3kDa according to Human NP_002890.2 and 15.8kDa according to Mouse NP_035384.1). Recommended concentration: 0.5-3ug/ml. Primary incubation 1 hour at room temperature. Immunofluorescence: Expression


 orb1247901
(2 ug/ml)
staining of
NIH3T3 ...

 orb1247901
(5 ug/ml)
staining of
paraffi...

 orb1247901
(5 ug/ml)
staining of
paraffi...