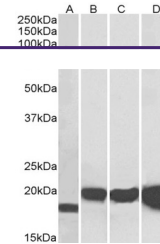


---

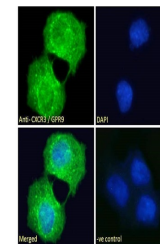
## Product Datasheet

### SOD1 Antibody (orb1247848)

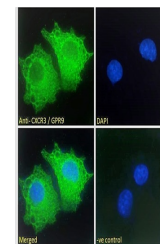
<b>Description</b>	SOD1 Antibody
<b>Species/Host</b>	Goat
<b>Reactivity</b>	Human, Mouse
<b>Conjugation</b>	Unconjugated
<b>Tested Applications</b>	EIA, ELISA, WB
<b>Immunogen</b>	The immunogen for this antibody is: C-SRKHGGPKDEERH
<b>Target</b>	SOD1
<b>Preservatives</b>	Supplied at 0.5 mg/ml in Tris saline, 0.02% sodium azide, pH 7.3 with 0.5% bovine serum albumin. Aliquot and store at -20°C. Minimize freezing and thawing.
<b>Form/Appearance</b>	Liquid
<b>Concentration</b>	500 ug/mL
<b>Storage</b>	Aliquot and store at -20°C. Minimize freezing and thawing.
<b>Note</b>	For research use only
<b>Application notes</b>	Peptide ELISA: antibody detection limit dilution 1:8000. Western Blot: Approx 18kDa band observed in Mouse Brain and Rat Spinal Cord lysates, and in lysates of cell line NIH3T3. Approx 20kDa observed in lysates of cell lines HEK293, HepG2 and MCF7 (calculated MW of 15.9kDa according to Human NP_000445.1, Mouse NP_035564.1 and Rat NP_058746.1). Recommended concentration: 0.01-0.03µg/ml. Primary incubation 1 hour at room temperature. Enzyme immunoassay: Sandwich-type ELISA with increasing amount of recombinant SOD1 captured by a rabbit antibody. Recommended reporter concentration: 1-2ug/ml
<b>Clonality</b>	Polyclonal
<b>Uniprot ID</b>	<a href="#">P00441</a>
<b>NCBI</b>	<a href="#">NP_000445.1</a>
<b>Dilution Range</b>	Peptide ELISA: antibody detection limit dilution 1:8000. Western Blot: Approx 18kDa band observed in Mouse Brain and Rat Spinal Cord lysates, and in lysates of cell line NIH3T3. Approx 20kDa observed in lysates of cell lines HEK293, HepG2 and MCF7 (calculated MW of 15.9kDa according to Human NP_000445.1, Mouse NP_035564.1 and Rat NP_058746.1). Recommended concentration: 0.01-0.03µg/ml. Primary incubation 1 hour at room temperature. Enzyme immunoassay: Sandwich-type ELISA with increasing amount of recombinant SOD1 captured by



orb1247848  
(0.02 µg/ml)  
staining of  
Mou...



orb1247848  
(0.01 µg/ml)  
staining of  
NIH...



orb1247848  
(1.5 ug/ml) as  
the reporter  
a...