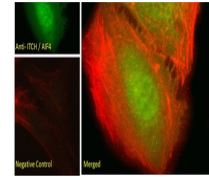
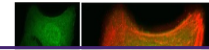
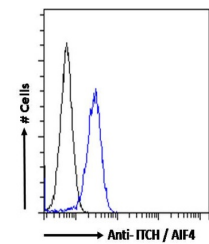

Product Datasheet

ITCH Antibody (orb1247828)

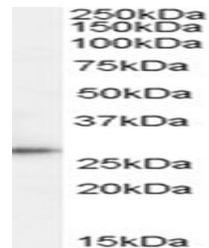
Description	ITCH Antibody
Species/Host	Goat
Reactivity	Human
Conjugation	Unconjugated
Tested Applications	ELISA, FC, IF, WB
Immunogen	The immunogen for this antibody is: C-EIKSHDLKPNGGN
Target	ITCH
Preservatives	Supplied at 0.5 mg/ml in Tris saline, 0.02% sodium azide, pH 7.3 with 0.5% bovine serum albumin. Aliquot and store at -20°C. Minimize freezing and thawing.
Form/Appearance	Liquid
Concentration	500 ug/mL
Storage	Aliquot and store at -20°C. Minimize freezing and thawing.
Note	For research use only
Application notes	Peptide ELISA: antibody detection limit dilution 1:16000. Western Blot: Approx 90kDa band observed in Human Brain (Frontal Cortex) lysates (calculated MW of 86.4kDa according to NP_001244067.1) . Recommended concentration: 0.1-0.3ug/ml. Primary incubation 1 hour at room temperature. Immunofluorescence: Strong expression of the protein seen in the nuclei of A431 and U2OS cells. Recommended concentration: 10ug/ml. Flow Cytometry: Flow cytometric analysis of HeLa cells. Recommended concentration: 10ug/ml.
Clonality	Polyclonal
Uniprot ID	Q96J02
NCBI	NP_113671.3 , NP_001244067.1 , NP_001244066.1
Dilution Range	Peptide ELISA: antibody detection limit dilution 1:16000. Western Blot: Approx 90kDa band observed in Human Brain (Frontal Cortex) lysates (calculated MW of 86.4kDa according to NP_001244067.1) . Recommended concentration: 0.1-0.3ug/ml. Primary incubation 1 hour at room temperature. Immunofluorescence: Strong expression of the protein seen in the nuclei of A431 and U2OS cells. Recommended concentration: 10ug/ml. Flow Cytometry: Flow cytometric analysis of HeLa cells. Recommended concentration: 10ug/ml.



orb1247828 (0.1 ug/ml) staining of Human...



orb1247828 Immunofluorescence analysis o...



orb1247828 Immunofluorescence analysis o...