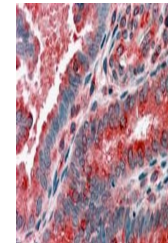

Product Datasheet

ACTR1B Antibody (orb1247765)

Description	ACTR1B Antibody
Species/Host	Goat
Reactivity	Human
Conjugation	Unconjugated
Tested Applications	ELISA, IHC, WB
Immunogen	The immunogen for this antibody is: C-YEEDGSRAIHRKT
Target	ACTR1B
Preservatives	Supplied at 0.5 mg/ml in Tris saline, 0.02% sodium azide, pH 7.3 with 0.5% bovine serum albumin. Aliquot and store at -20°C. Minimize freezing and thawing.
Form/Appearance	Liquid
Concentration	500 ug/mL
Storage	Aliquot and store at -20°C. Minimize freezing and thawing.
Note	For research use only
Application notes	Peptide ELISA: antibody detection limit dilution 1:128000.Western Blot:Approx 45kDa band observed in human heart and brain lysates (predicted MW of 43kDa according to NP_005726). Recommended for use at 0.5-2ug/ml.Immunohistochemistry:In paraffin embedded Human Uterus shows fibrillar staining of cytoplasm in endometrial cells. Recommended concentration, 3-5ug/ml.
Clonality	Polyclonal
Uniprot ID	P42025
NCBI	NP_005726.1
Dilution Range	Peptide ELISA: antibody detection limit dilution 1:128000.Western Blot:Approx 45kDa band observed in human heart and brain lysates (predicted MW of 43kDa according to NP_005726). Recommended for use at 0.5-2ug/ml.Immunohistochemistry:In paraffin embedded Human Uterus shows fibrillar staining of cytoplasm in endometrial cells. Recommended concentration, 3-5ug/ml.
Expiration Date	12 months from date of receipt.



orb1247765 staining (1 ug/ml) of human h...



orb1247765 (3.8 ug/ml) staining of paraf...