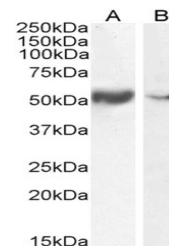

Product Datasheet

SLC7A11 Antibody (orb1247762)

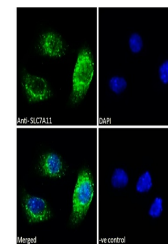
Description	SLC7A11 Antibody
Species/Host	Goat
Reactivity	Human
Conjugation	Unconjugated
Tested Applications	ELISA, FC, IF, IHC, WB
Immunogen	The immunogen for this antibody is: C-KGQTQNFKDAFSGRD
Target	SLC7A11
Preservatives	Supplied at 0.5 mg/ml in Tris saline, 0.02% sodium azide, pH 7.3 with 0.5% bovine serum albumin. Aliquot and store at -20°C. Minimize freezing and thawing.
Form/Appearance	Liquid
Concentration	500 ug/mL
Storage	Aliquot and store at -20°C. Minimize freezing and thawing.
Note	For research use only
Application notes	Peptide ELISA: antibody detection limit dilution 1:128000. Western Blot: Approx 50-55kDa band observed in lysates of cell lines A549 and U2OS, and in Human Smooth Muscle and Tonsil lysates (calculated MW of 55.4kDa according to NP_055146.1). Recommended concentration: 0.03-0.3ug/ml. Primary incubation 1 hour at room temperature. Immunohistochemistry: Paraffin embedded Human Placenta and Kidney. Recommended concentration: 3.75ug/ml. Immunofluorescence: Strong expression of the protein seen in the vesicles/ cytoplasm of A549 cells. Recommended concentration: 10ug/ml. Flow Cytometry: Flow cytometric analysis of A549 cells. Recommended concentration: 10ug/ml.
Clonality	Polyclonal
Uniprot ID	Q9UPY5
NCBI	NP_055146.1
Dilution Range	Peptide ELISA: antibody detection limit dilution 1:128000. Western Blot: Approx 50-55kDa band observed in lysates of cell lines A549 and U2OS, and in Human Smooth Muscle and Tonsil lysates (calculated MW of 55.4kDa according to NP_055146.1). Recommended concentration: 0.03-0.3ug/ml. Primary incubation 1 hour at room temperature. Immunohistochemistry: Paraffin embedded Human Placenta and Kidney. Recommended concentration: 3.75ug/ml. Immunofluorescence: Strong expression of the



orb1247762
(3.75 ug/ml)
staining of para...



orb1247762
(3.75 ug/ml)
staining of para...



orb1247762
(0.3 ug/ml)
staining of A549 ...