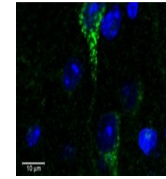
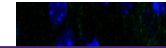


---

## Product Datasheet

### STS Antibody (orb1247760)

<b>Description</b>	STS Antibody
<b>Species/Host</b>	Goat
<b>Reactivity</b>	Human
<b>Conjugation</b>	Unconjugated
<b>Tested Applications</b>	ELISA, WB
<b>Immunogen</b>	The immunogen for this antibody is: C-QAGQKIDEPTSN
<b>Target</b>	STS
<b>Preservatives</b>	Supplied at 0.5 mg/ml in Tris saline, 0.02% sodium azide, pH 7.3 with 0.5% bovine serum albumin. Aliquot and store at -20°C. Minimize freezing and thawing.
<b>Form/Appearance</b>	Liquid
<b>Concentration</b>	500 ug/mL
<b>Storage</b>	Aliquot and store at -20°C. Minimize freezing and thawing.
<b>Note</b>	For research use only
<b>Application notes</b>	Peptide ELISA: antibody detection limit dilution 1:32000. Western Blot: Approx 70kDa band observed in Human Placenta lysates (calculated MW of 65.5kDa according to NP_000342.2). Recommended concentration: 0.01-0.03ug/ml.
<b>Clonality</b>	Polyclonal
<b>Uniprot ID</b>	<a href="#">P08842</a>
<b>NCBI</b>	<a href="#">NP_000342.2</a>
<b>Dilution Range</b>	Peptide ELISA: antibody detection limit dilution 1:32000. Western Blot: Approx 70kDa band observed in Human Placenta lysates (calculated MW of 65.5kDa according to NP_000342.2). Recommended concentration: 0.01-0.03ug/ml.
<b>Expiration Date</b>	12 months from date of receipt.



orb1247760  
(0.01 ug/ml)  
staining of  
Huma...