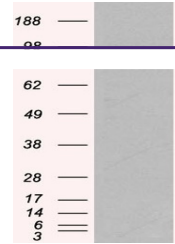
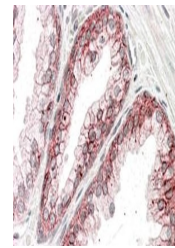

Product Datasheet

CTNNA1 Antibody (orb1247702)

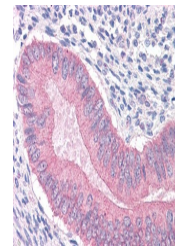
| | |
|----------------------------|---------------------------------------------------------------------------------------------------------------------------------------------------------------------------------------------------------------------------------------------------------------------------------------------------------------------------------------------|
| Description | CTNNA1 Antibody |
| Species/Host | Goat |
| Reactivity | Human |
| Conjugation | Unconjugated |
| Tested Applications | ELISA, IHC, WB |
| Immunogen | The immunogen for this antibody is: C-KREKQDETQTKIK |
| Target | CTNNA1 |
| Preservatives | Supplied at 0.5 mg/ml in Tris saline, 0.02% sodium azide, pH 7.3 with 0.5% bovine serum albumin. Aliquot and store at -20°C. Minimize freezing and thawing. |
| Form/Appearance | Liquid |
| Concentration | 500 ug/mL |
| Storage | Aliquot and store at -20°C. Minimize freezing and thawing. |
| Note | For research use only |
| Application notes | Peptide ELISA: antibody detection limit dilution 1:32000. Western Blot: Approx 100kDa band observed in human colon and human skin lysates (calculated MW of 100kDa according to NP_001894.2). Recommended concentration: 1-3ug/ml. Immunohistochemistry: Paraffin embedded Human Prostate and Uterus. Recommended concentration: 3.75ug/ml. |
| Clonality | Polyclonal |
| Uniprot ID | P35221 |
| NCBI | NP_001894.2 |
| Dilution Range | Peptide ELISA: antibody detection limit dilution 1:32000. Western Blot: Approx 100kDa band observed in human colon and human skin lysates (calculated MW of 100kDa according to NP_001894.2). Recommended concentration: 1-3ug/ml. Immunohistochemistry: Paraffin embedded Human Prostate and Uterus. Recommended concentration: 3.75ug/ml. |
| Expiration Date | 12 months from date of receipt. |



orb1247702 (1 ug/ml) staining of human c...



HEK293 overexpressing Human CTNNA1 and p...



orb1247702 (3.75 ug/ml) staining of para...