

---

## Product Datasheet

### CBR1 Antibody (orb1247699)

**Description**

CBR1 Antibody

**Species/Host**

Goat

**Reactivity**

Human

**Conjugation**

Unconjugated

**Tested Applications**

ELISA, IF, IHC, WB

**Applications**
**Immunogen**

The immunogen for this antibody is: C-HGQFVSEKRVEQW

**Target**

CBR1

**Preservatives**

Supplied at 0.5 mg/ml in Tris saline, 0.02% sodium azide, pH 7.3 with 0.5% bovine serum albumin. Aliquot and store at -20°C. Minimize freezing and thawing.

**Form/Appearance**

Liquid

**Concentration**

500 ug/mL

**Storage**

Aliquot and store at -20°C. Minimize freezing and thawing.

**Note**

For research use only

**Application notes**


Peptide ELISA: antibody detection limit dilution 1:8000. Western Blot: Approx 30-35kDa band observed in lysates of Glioblastoma cell line U251 and in Human Kidney lysates (calculated MW of 30.4kDa according to NP\_001748.1). Recommended concentration: 0.1-0.3ug/ml. Primary incubation 1 hour at room temperature. Immunohistochemistry: In paraffin embedded Human Kidney shows cytoplasmic staining of epithelial cells of renal tubules. Recommended concentration: 1-2ug/ml. Immunofluorescence: Strong expression of the protein seen in the cytoplasm of U251 cells. Recommended concentration: 10ug/ml.


**Clonality**

Polyclonal

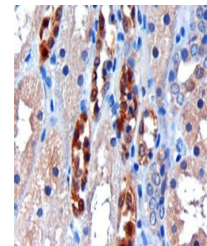
**Uniprot ID**
**P16152**
**NCBI**
**NP\_001748.1**
**Dilution Range**

Peptide ELISA: antibody detection limit dilution 1:8000. Western Blot: Approx 30-35kDa band observed in lysates of Glioblastoma cell line U251 and in Human Kidney lysates (calculated MW of 30.4kDa according to NP\_001748.1). Recommended concentration: 0.1-0.3ug/ml. Primary incubation 1 hour at room temperature. Immunohistochemistry: In paraffin embedded Human Kidney shows cytoplasmic staining of epithelial cells of renal tubules. Recommended concentration: 1-2ug/ml. Immunofluorescence: Strong expression of the

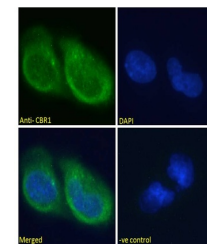

 250kDa  
150kDa  
100kDa


 50kDa  
37kDa  
25kDa  
20kDa  
15kDa

orb1247699 (0.1 ug/ml) staining of Human...



orb1247699 (3 ug/ml) staining of paraffi...



orb1247699 Immunofluorescence analysis o...