
Product Datasheet

CCKBR Antibody (orb1247691)

Description

CCKBR Antibody

Species/Host

Goat

Reactivity

Human, Mouse, Rat

Conjugation

Unconjugated

Tested

ELISA, IHC, WB

Applications
Immunogen

The immunogen for this antibody is: C-FDGSDSDSQSRVRNQ

Target

CCKBR

Preservatives

Supplied at 0.5 mg/ml in Tris saline, 0.02% sodium azide, pH 7.3 with 0.5% bovine serum albumin. Aliquot and store at -20°C. Minimize freezing and thawing.

Form/Appearance

Liquid

Concentration

500 ug/mL

Storage

Aliquot and store at -20°C. Minimize freezing and thawing.

Note

For research use only

Application notes

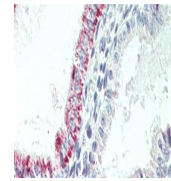
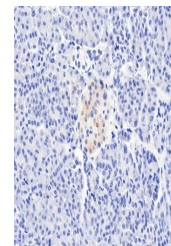
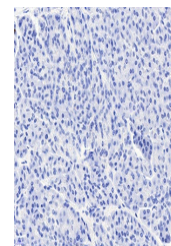
Peptide ELISA: antibody detection limit dilution 1:16000. Western Blot: Approx 80kDa band observed in Mouse Pancreas and Rat Stomach lysates (calculated MW of 49.2kDa according to Mouse NP_031653.1 and 49.0kDa according to Rat NP_037297.1). The observed molecular weight also corresponds to earlier findings in literature with different antibodies (Morisset et al J Histochem Cytochem. 2003 Nov;51(11):1501-13; PMID: 14566022). Recommended concentration: 1-3ug/ml. Primary incubation was 1 hour. Immunohistochemistry: Paraffin embedded Human Uterus. Recommended concentration: 5ug/ml. In paraffin embedded Human Pancreas expression of CCKBR is detected in islet cells, and not in surrounding acinar cells. Recommended concentration: 6ug/ml.

Clonality

Polyclonal

Uniprot ID
P32239
NCBI
NP_795344.1
Dilution Range

Peptide ELISA: antibody detection limit dilution 1:16000. Western Blot: Approx 80kDa band observed in Mouse Pancreas and Rat Stomach lysates (calculated MW of 49.2kDa according to Mouse NP_031653.1 and 49.0kDa according to Rat NP_037297.1). The observed molecular weight also corresponds to earlier findings in literature with different antibodies (Morisset et al J Histochem Cytochem. 2003 Nov;51(11):1501-13; PMID: 14566022). Recommended


 orb1247691
(1 ug/ml)
staining of
Mouse P...

 orb1247691
(5 ug/ml)
staining of
paraffi...

 orb1247691
(6 ug/ml)
staining of
paraffi...