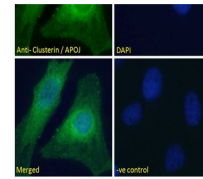
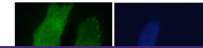
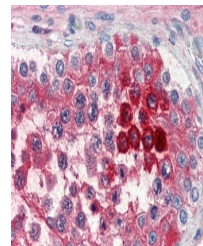

Product Datasheet

CLU Antibody (orb1247667)

Description	CLU Antibody
Species/Host	Goat
Reactivity	Human
Conjugation	Unconjugated
Tested Applications	ELISA, IF, WB
Immunogen	The immunogen for this antibody is: C-EKALQEYRKKHREE
Target	CLU
Preservatives	Supplied at 0.5 mg/ml in Tris saline, 0.02% sodium azide, pH 7.3 with 0.5% bovine serum albumin. Aliquot and store at -20°C. Minimize freezing and thawing.
Form/Appearance	Liquid
Concentration	500 ug/mL
Storage	Aliquot and store at -20°C. Minimize freezing and thawing.
Note	For research use only
Application notes	Peptide ELISA: antibody detection limit dilution 1:64000. Western Blot: Approx 35-37kDa band observed in Human Colon and Prostate lysates (calculated MW of 57.8kDa according to NP_NP_001822.2 and 52.5 according to NP_976084.1). The observed molecular weight corresponds to earlier findings in literature (PMID: 9713325 and PMID: 11560857). Recommended concentration: 0.03-0.1ug/ml. Primary incubation was 1 hour. Immunofluorescence: Strong expression of the protein seen in the cytoplasm of HeLa cells. Recommended concentration: 10ug/ml
Clonality	Polyclonal
Uniprot ID	P10909
NCBI	NP_001822.2 , NP_976084.1
Dilution Range	Peptide ELISA: antibody detection limit dilution 1:64000. Western Blot: Approx 35-37kDa band observed in Human Colon and Prostate lysates (calculated MW of 57.8kDa according to NP_NP_001822.2 and 52.5 according to NP_976084.1). The observed molecular weight corresponds to earlier findings in literature (PMID: 9713325 and PMID: 11560857). Recommended concentration: 0.03-0.1ug/ml. Primary incubation was 1 hour. Immunofluorescence: Strong expression of the



orb1247667 (5 ug/ml) staining of paraffi...



orb1247667 (0.1 ug/ml) staining of Human...



orb1247667 Immunofluorescence analysis o...